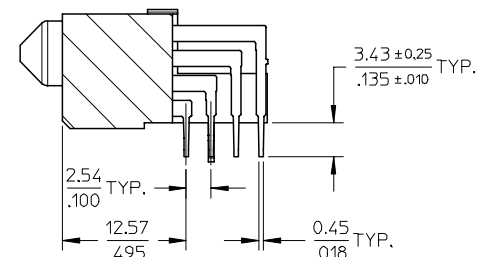
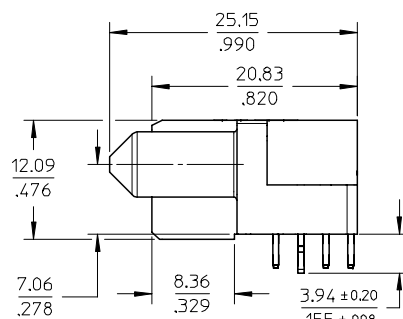
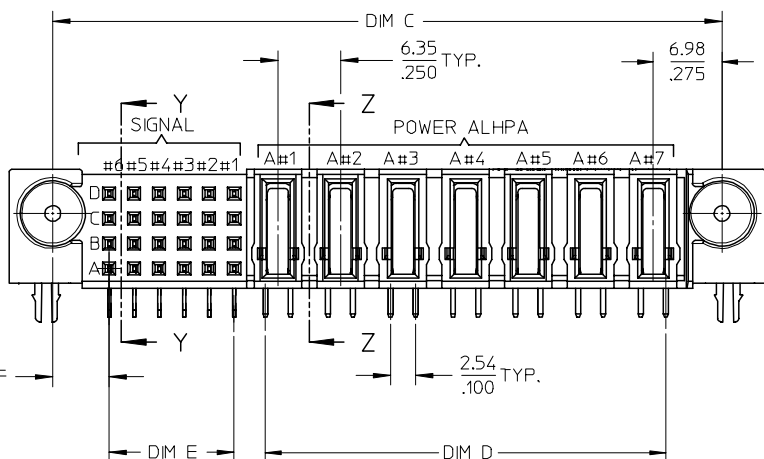
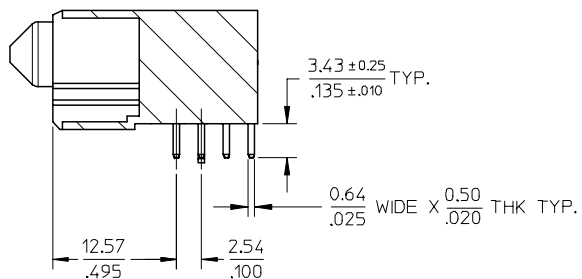


3-D VIEW OF  
7 POWER-24 SIGNAL  
FOR ILLUSTRATION.



SECTION Y-Y



SECTION Z-Z

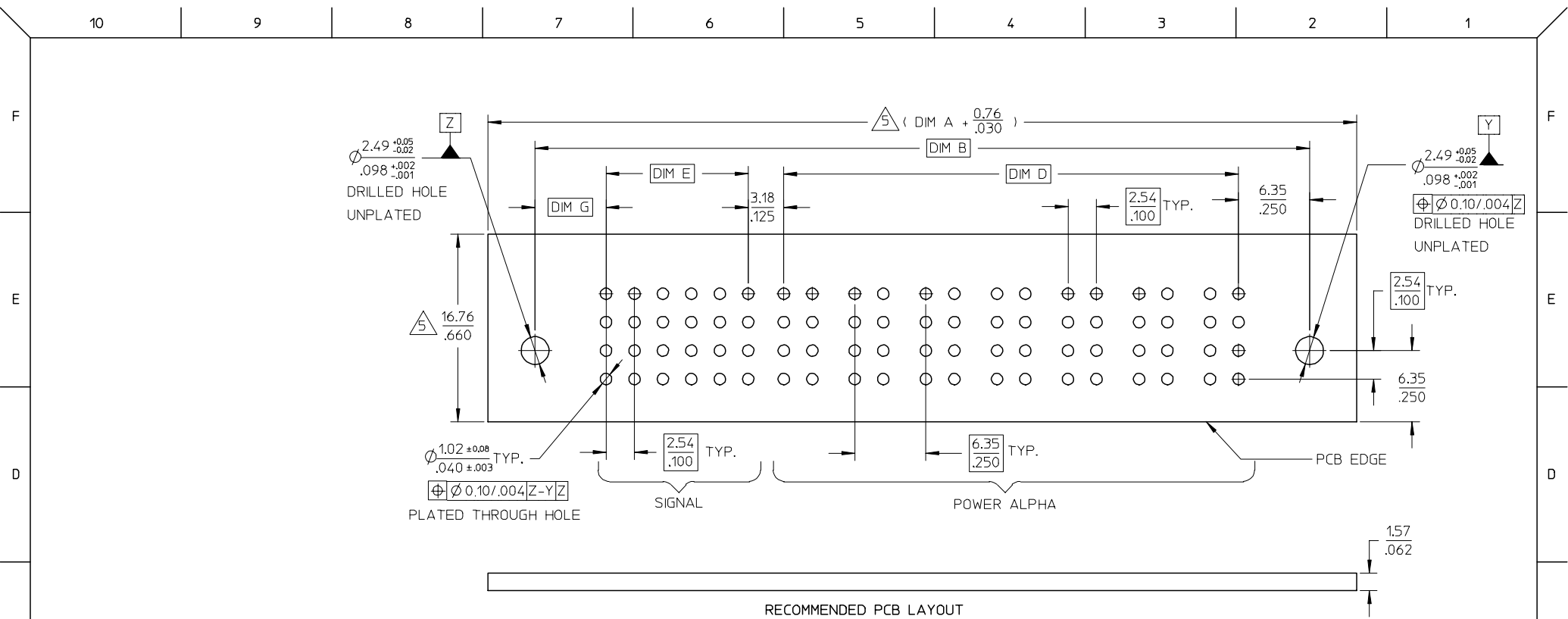
PDR#S-001245-00-00	2006/05/09
EC NO: S2006-1028	2006/05/09
DRWN:KELIM	2006/05/10
CHKD:MLONG	
APPR:PTLIM	
REV	DESCRIPTION
D1	

QUALITY SYMBOLS	▽=0
	▽=0

GENERAL TOLERANCES (UNLESS SPECIFIED)	
	mm
	INCH
4 PLACES	± .010
3 PLACES	± .020
2 PLACES	± .050
1 PLACE	± .125
ANGULAR ± 3°	
DRAFT WHERE APPLICABLE MUST REMAIN WITHIN DIMENSIONS	

DIMENSION STYLE	
MM/IN	
DRAWN BY	DATE
DATE	DATE
CHECKED BY	DATE
DATE	DATE
APPROVED BY	DATE
DATE	DATE
SKT0H	2002/11/26
MATERIAL NO.	
SEE TABLE	
SIZE	A3

SCALE	DESIGN UNITS	THIRD ANGLE PROJECTION
NTS	METRIC	
TITLE		
POWER CONNECTOR RECEPT.		
P(A)-S CONFIGURATION		
R/A, T/H, 6.35MM		
MOLEX INCORPORATED		
DOCUMENT NO.	SHEET NO.	
SD-87700-010	1 OF 3	
THIS DRAWING CONTAINS INFORMATION THAT IS PROPRIETARY TO MOLEX INCORPORATED AND SHOULD NOT BE USED WITHOUT WRITTEN PERMISSION		



- NOTES:
- MATERIALS : HOUSING - LCP, GLASS FILLED, UL 94V-0, COLOR: BLACK  
 POWER PINS - COPPER ALLOY  
 SIGNAL PINS - COPPER ALLOY  
 BOARD LOCK - COPPER ALLOY
  - FINISHES: POWER AD SIGNAL PINS  
 SELECTIVE GOLD IN THE CONTACT AREA  
 THICKNESS = 0.76 MICROMETER / 30 MICROINCH MINIMUM  
 SELECTIVE TIN IN THE PC TAIL AREA  
 THICKNESS = 2.54 MICROMETER / 100 MICROINCH MINIMUM  
 NICKEL OVERALL
  - PRODUCT SPECIFICATIONS : PS-87631-006
  - SEE SHEET 2 FOR RECOMMENDED PCB LAYOUT AND THICKNESS
  - COMPONENT STAY AWAY ZONE FROM CONNECTOR
  - REFER TO THE TABLE ON TOP OF PAGE 3/3 FOR RECESSED PINS LOCATION
  - 7 POWER - 24 SIGNAL CONNECTOR IS SHOWN FOR ILLUSTRATION

PDR#S-001245-00-00 EC NO: S2006-1028 DRWN:KELIM 2006/05/09 CHKD:M.LONG 2006/05/09 APPR:PTL IM 2006/05/10 REV D1	QUALITY SYMBOLS	GENERAL TOLERANCES (UNLESS SPECIFIED)		DIMENSION STYLE MM/IN		SCALE NTS	DESIGN UNITS METRIC	THIRD ANGLE PROJECTION	
	$\nabla = 0$ $\triangle = 0$	mm	INCH	DRAWN BY KMG0H	DATE 2002/08/20	TITLE	POWER CONNECTOR RECEPT. P(A)-S CONFIGURATION R/A, T/H, 6.35MM		
		4 PLACES $\pm$ ---	$\pm$ ---	CHECKED BY PTL IM	DATE 2002/11/25	MOLEX INCORPORATED			
		3 PLACES $\pm$ ---	$\pm .010$	APPROVED BY SKT0H	DATE 2002/11/26	DOCUMENT NO. SD-87700-010	SHEET NO. 2 OF 3		
		2 PLACES $\pm 0.25$	$\pm$ ---	MATERIAL NO. SEE TABLE					
		1 PLACE $\pm$ ---	$\pm$ ---	DRAFT WHERE APPLICABLE MUST REMAIN WITHIN DIMENSIONS					
		ANGULAR $\pm 3^\circ$		SIZE A3		THIS DRAWING CONTAINS INFORMATION THAT IS PROPRIETARY TO MOLEX INCORPORATED AND SHOULD NOT BE USED WITHOUT WRITTEN PERMISSION			

PART NUMBER	P-S CONFIGURATION		DIM A	DIM B	DIM C	DIM D	DIM E	DIM F	DIM G	RECESS POWER PINS LOCATIONS	VOID PIN LOCATION	PACKAGING
	SIGNAL	POWER ALPHA										
87700-3002	24	7	76.83 3.025	69.22 2.725	67.94 2.675	40.64 1.600	12.70 .500	5.72 .225	6.35 .250	NIL	NIL	TRAY
87700-3003	16	4	52.70 2.075	45.09 1.775	43.81 1.725	21.59 .850	7.62 .300	5.72 .225	6.35 .250	NIL	NIL	TRAY
87700-3005	16	4	52.07 2.050	44.45 1.750	43.18 1.700	21.59 .850	7.62 .300	5.08 .200	5.72 .225	NIL	NIL	TRAY
87700-3006	20	4	54.61 2.150	46.99 1.850	45.72 1.800	21.59 .850	10.16 0.400	5.08 .200	5.72 .225	NIL	A2,B2,C2,D2	TRAY

PDR#S-001245-00-00 EC NO: S2006-1028 DRWN:KELIM 2006/05/09 CHKD:M.LONG 2006/05/09 APPR:PTLIM 2006/05/10 REV D1	QUALITY SYMBOLS	GENERAL TOLERANCES (UNLESS SPECIFIED)	DIMENSION STYLE	SCALE	DESIGN UNITS	THIRD ANGLE PROJECTION																		
	= 0 = 0	<table border="1"> <tr> <th></th> <th>mm</th> <th>INCH</th> </tr> <tr> <td>4 PLACES</td> <td>± .010</td> <td>± .0004</td> </tr> <tr> <td>3 PLACES</td> <td>± .015</td> <td>± .0006</td> </tr> <tr> <td>2 PLACES</td> <td>± 0.25</td> <td>± .010</td> </tr> <tr> <td>1 PLACE</td> <td>± .010</td> <td>± .0004</td> </tr> </table>		mm	INCH	4 PLACES	± .010	± .0004	3 PLACES	± .015	± .0006	2 PLACES	± 0.25	± .010	1 PLACE	± .010	± .0004	MM/IN	NTS	METRIC				
		mm	INCH																					
	4 PLACES	± .010	± .0004																					
	3 PLACES	± .015	± .0006																					
2 PLACES	± 0.25	± .010																						
1 PLACE	± .010	± .0004																						
DESCRIPTION	<table border="1"> <tr> <th>DRAWN BY</th> <th>DATE</th> <th>TITLE</th> </tr> <tr> <td>KMGOH</td> <td>2002/08/20</td> <td rowspan="3">POWER CONNECTOR RECEPT. P(A)-S CONFIGURATION R/A, T/H, 6.35MM</td> </tr> <tr> <th>CHECKED BY</th> <th>DATE</th> </tr> <tr> <td>PTLIM</td> <td>2002/11/25</td> </tr> </table>	DRAWN BY	DATE	TITLE	KMGOH	2002/08/20	POWER CONNECTOR RECEPT. P(A)-S CONFIGURATION R/A, T/H, 6.35MM	CHECKED BY	DATE	PTLIM	2002/11/25	<table border="1"> <tr> <th>APPROVED BY</th> <th>DATE</th> </tr> <tr> <td>SKTOH</td> <td>2002/11/26</td> </tr> </table>	APPROVED BY	DATE	SKTOH	2002/11/26	MOLEX INCORPORATED	<table border="1"> <tr> <th>MATERIAL NO.</th> <th>DOCUMENT NO.</th> <th>SHEET NO.</th> </tr> <tr> <td>SEE TABLE</td> <td>SD-87700-010</td> <td>3 OF 3</td> </tr> </table>	MATERIAL NO.	DOCUMENT NO.	SHEET NO.	SEE TABLE	SD-87700-010	3 OF 3
DRAWN BY	DATE	TITLE																						
KMGOH	2002/08/20	POWER CONNECTOR RECEPT. P(A)-S CONFIGURATION R/A, T/H, 6.35MM																						
CHECKED BY	DATE																							
PTLIM	2002/11/25																							
APPROVED BY	DATE																							
SKTOH	2002/11/26																							
MATERIAL NO.	DOCUMENT NO.	SHEET NO.																						
SEE TABLE	SD-87700-010	3 OF 3																						
DRAFT WHERE APPLICABLE MUST REMAIN WITHIN DIMENSIONS	<table border="1"> <tr> <th>SIZE</th> <th>THIS DRAWING CONTAINS INFORMATION THAT IS PROPRIETARY TO MOLEX INCORPORATED AND SHOULD NOT BE USED WITHOUT WRITTEN PERMISSION</th> </tr> <tr> <td>A3</td> <td></td> </tr> </table>	SIZE	THIS DRAWING CONTAINS INFORMATION THAT IS PROPRIETARY TO MOLEX INCORPORATED AND SHOULD NOT BE USED WITHOUT WRITTEN PERMISSION	A3																				
SIZE	THIS DRAWING CONTAINS INFORMATION THAT IS PROPRIETARY TO MOLEX INCORPORATED AND SHOULD NOT BE USED WITHOUT WRITTEN PERMISSION																							
A3																								