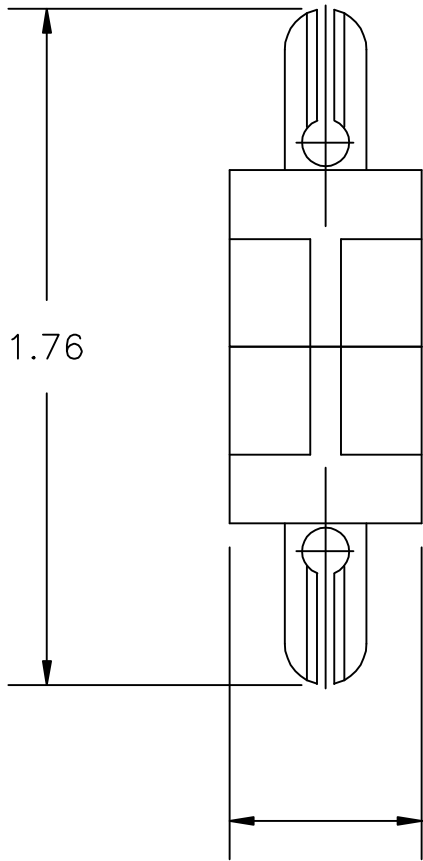
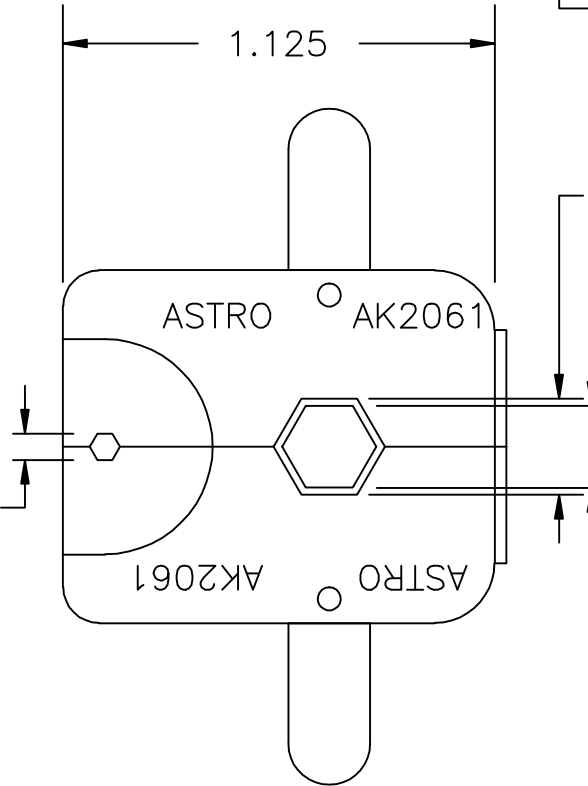


HEX CAVITY SIZES:  
 .068 HEX x .080 WIDTH  
 .213 HEX x .340 WIDTH  
 .251 HEX x .110 WIDTH (2X)

# AK2061-ENV



.068±.002 HEX



.250±.002 HEX

.213±.002 HEX

**UNCONTROLLED DOCUMENT**  
**WILL NOT BE UPDATED**

2. NOT FOR USE IN M22520/5-01 TOOL FRAME.

NOTES: 1. THIS IS AN AUTOCAD DRAWING DO NOT CHANGE MANUALLY.

					THESE DRAWINGS, SPECIFICATIONS OR OTHER DATA ARE AND REMAIN, THE PROPERTY OF ASTRO TOOL CORP. AND MUST BE RETURNED UPON REQUEST. THEY CONTAIN INFORMATION OWNED AND/OR DEVELOPED BY ASTRO AT ITS OWN PRIVATE EXPENSE AND MAY NOT BE USED, DUPLICATED OR DISCLOSED TO OTHERS, IN WHOLE OR IN PART FOR DESIGN, MANUFACTURE OR PROCUREMENT WITHOUT THE WRITTEN PERMISSION OF ASTRO TOOL CORP. EACH AND EVERY TIME.		SCALE: N.T.S. DWN BY: DY0 DATE: 12-30-09 APPROVED:		UNLESS OTHERWISE SPECIFIED: DECIMALS: .XXX ± .005 .XX ± .010 .X ± .030 ANGLES: ± 1°		CAGE 58164 <b>ASTRO TOOL CORP.</b> 21615 S.W. TUALATIN VALLEY HWY., BEAVERTON OR 97006	
A	NEW RELEASE.	DY0	12-30-09	MMK	DESCRIPTION: ENVELOPE DRAWING: AK2061 DIE SET, SPECIAL		PART NO.		A	AK2061-ENV		
REV.	DESCRIPTION	BY	DATE	APR.								