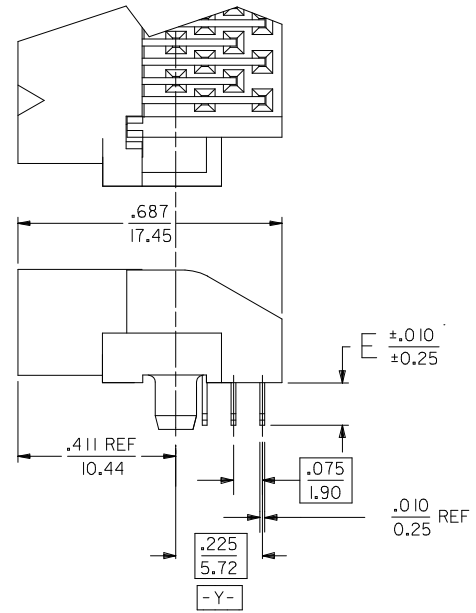
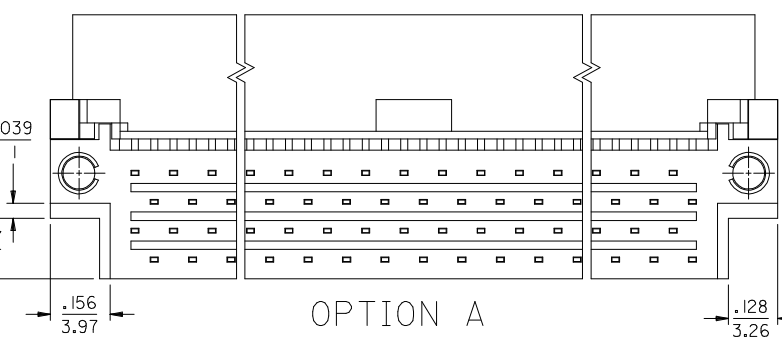
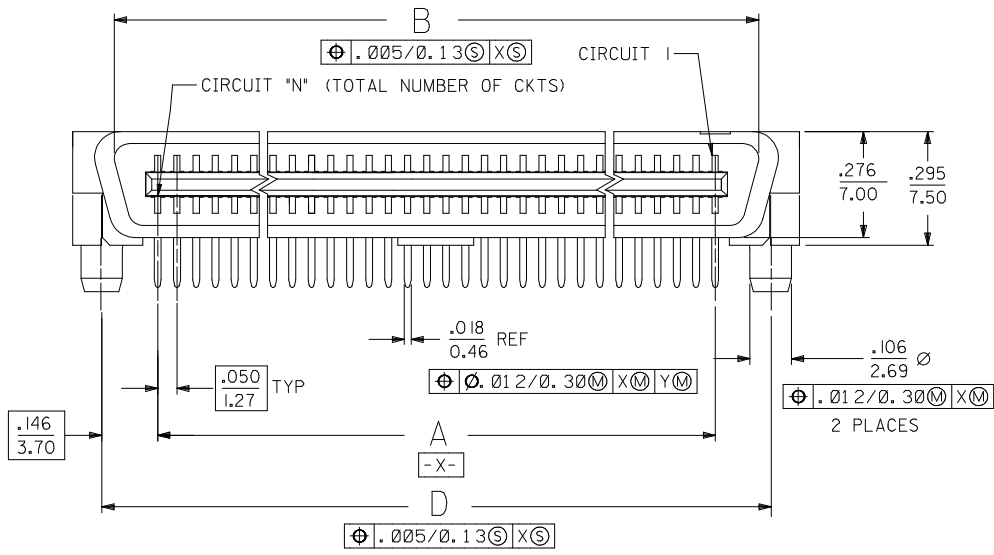


- NOTES:**
- MATERIALS:**  
HOUSING: LIQUID CRYSTAL POLYMER (LCP), GLASS-FILLED, UL 94V-0,  
COLOR: BLACK  
TERMINALS: BRASS.
  - FINISH:**  
TERMINAL: SELECTIVE GOLD (Au) IN THE CONTACT AREA;  
THICKNESS= .76 MICROMETER (30 MICROINCH) MINIMUM;  
SELECTIVE TIN (Sn) ALLOY IN THE PC TAIL AREA;  
THICKNESS= 1.27 MICROMETER (50 MICROINCH) MINIMUM;  
NICKEL (Ni) UNDERPLATE OVERALL.
  - ASSEMBLY MATES WITH MOLEX P/N SDA-71660-\*\*\*\*
  - CONFORMS TO PRODUCT SPEC: PS-71660.
- RECOMMENDED P.C. BOARD THICKNESS IS .062 (1.6).
- FOUR DIGIT DATE CODE (WK. YR.) EXAMPLE 26 96 LOCATED IN AREA SHOWN.
- TOOLING STATUS: \*X\* INDICATES NO TOOLING AVAILABLE. CONTACT FACTORY FOR FURTHER INFORMATION.

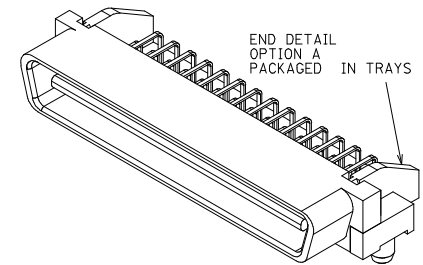
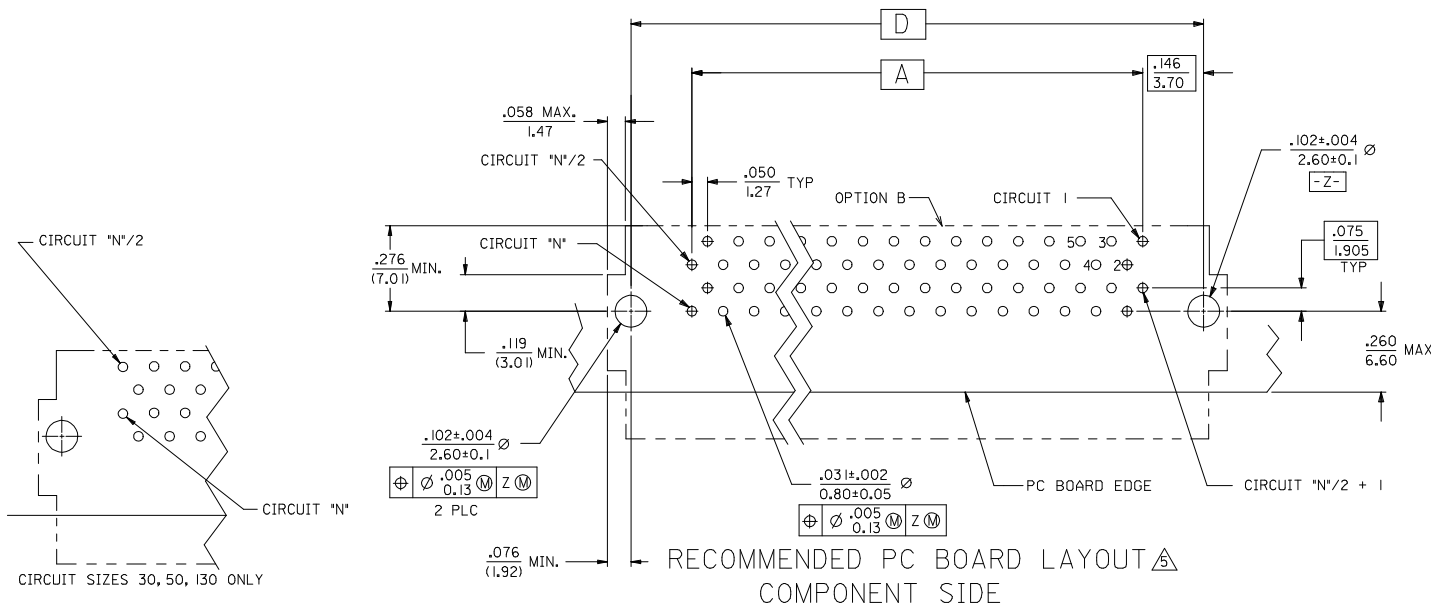


END DETAIL  
OPTION A  
(BOTH ENDS)



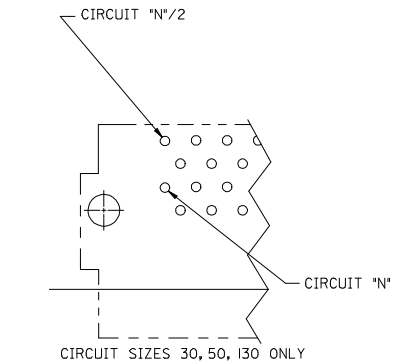
OPTION A

| <b>CHANGE MATERIAL</b><br>EC NO: UCP2009-1254<br>DRWN:MSI:BARRA 2008/12/19<br>CHKD:BBARKER 2009/01/06<br>APPR:SMILLER 2009/01/06 | DESCRIPTION<br>REV | QUALITY SYMBOLS<br>▽=0<br>▽=0       | GENERAL TOLERANCES (UNLESS SPECIFIED)<br><table border="1"> <tr> <th></th> <th>mm</th> <th>INCH</th> </tr> <tr> <td>4 PLACES ±</td> <td>---</td> <td>---</td> </tr> <tr> <td>3 PLACES ±</td> <td>---</td> <td>±.010</td> </tr> <tr> <td>2 PLACES ±</td> <td>0.25</td> <td>---</td> </tr> <tr> <td>1 PLACE ±</td> <td>---</td> <td>---</td> </tr> </table> |   | mm | INCH | 4 PLACES ± | --- | --- | 3 PLACES ± | --- | ±.010 | 2 PLACES ± | 0.25 | --- | 1 PLACE ± | --- | --- | DIMENSION STYLE<br><b>IN/MM</b> | SCALE<br><b>4:1</b> | DESIGN UNITS<br><b>INCH</b> | THIRD ANGLE PROJECTION |
|--|--------------------|-------------------------------------|---|---|----|------|------------|-----|-----|------------|-----|-------|------------|------|-----|-----------|-----|-----|---------------------------------|---------------------|-----------------------------|------------------------|
|  |                    |                                     | mm  | INCH  |    |      |            |     |     |            |     |       |            |      |     |           |     |     |                                 |                     |                             |                        |
| 4 PLACES ±   | ---                | ---                                 |   |   |    |      |            |     |     |            |     |       |            |      |     |           |     |     |                                 |                     |                             |                        |
| 3 PLACES ±   | ---                | ±.010                               |   |   |    |      |            |     |     |            |     |       |            |      |     |           |     |     |                                 |                     |                             |                        |
| 2 PLACES ±   | 0.25               | ---                                 |   |   |    |      |            |     |     |            |     |       |            |      |     |           |     |     |                                 |                     |                             |                        |
| 1 PLACE ±  | ---                | ---                                 |   |   |    |      |            |     |     |            |     |       |            |      |     |           |     |     |                                 |                     |                             |                        |
| DRAWN BY<br>RKADAMS  | DATE<br>2004/08/18 | CHECKED BY<br>BBARKER               | DATE<br>2004/08/18  | <b>SALES ASSEMBLY<br/>EBBI 50D RIGHT ANGLE<br/>PLUG CONNECTOR</b> |    |      |            |     |     |            |     |       |            |      |     |           |     |     |                                 |                     |                             |                        |
| APPROVED BY<br>SMILLER   |                    | DATE<br>2004/08/18                  |   | <b>MOLEX INCORPORATED</b>   |    |      |            |     |     |            |     |       |            |      |     |           |     |     |                                 |                     |                             |                        |
| MATERIAL NO.<br><b>SEE TABLE</b>   |                    | DOCUMENT NO.<br><b>SD-71661-007</b> |   | SHEET NO.<br><b>1 OF 2</b>  |    |      |            |     |     |            |     |       |            |      |     |           |     |     |                                 |                     |                             |                        |
| DRAFT WHERE APPLICABLE MUST REMAIN WITHIN DIMENSIONS   |                    |                                     |   |   |    |      |            |     |     |            |     |       |            |      |     |           |     |     |                                 |                     |                             |                        |
| THIS DRAWING CONTAINS INFORMATION THAT IS PROPRIETARY TO MOLEX INCORPORATED AND SHOULD NOT BE USED WITHOUT WRITTEN PERMISSION    |                    |                                     |   |   |    |      |            |     |     |            |     |       |            |      |     |           |     |     |                                 |                     |                             |                        |



50 CIRCUIT ASSEMBLY SHOWN

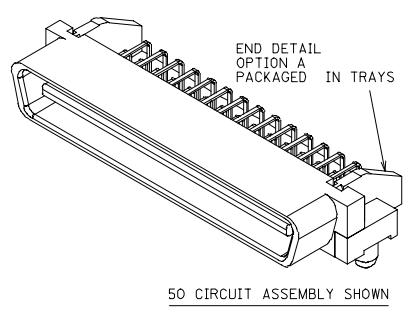
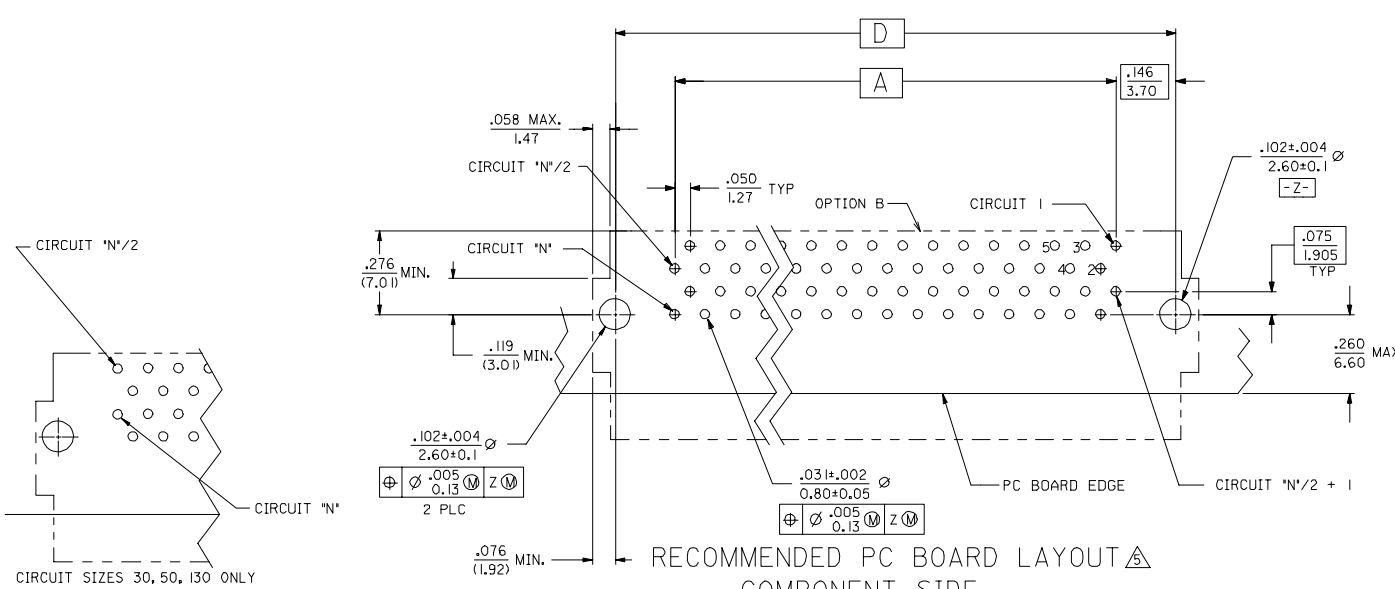
RECOMMENDED PC BOARD LAYOUT  
COMPONENT SIDE



|               |               | TRAY PACK PER SPEC. PK-70873-084* |               |               |               |           | END DETAIL OPTION 'A' |
|---------------|---------------|-----------------------------------|---------------|---------------|---------------|-----------|-----------------------|
|               |               | D                                 | C             | B             | A             | CKT ('N') | ITEM NUMBER           |
| .125 (3.18)   | 3.491 (88.68) | 3.642 (92.50)                     | 3.426 (87.02) | 3.200 (81.28) | 130           |           |                       |
|               | 3.241 (82.33) | 3.392 (86.15)                     | 3.176 (80.67) | 2.950 (74.93) | 120           |           |                       |
|               | 2.741 (69.63) | 2.892 (73.45)                     | 2.676 (67.97) | 2.450 (62.23) | 100           |           |                       |
|               | 2.241 (56.93) | 2.392 (60.75)                     | 2.176 (55.27) | 1.950 (49.53) | 80            |           |                       |
|               | 1.941 (49.31) | 2.092 (53.13)                     | 1.875 (47.65) | 1.650 (41.91) | 68            |           |                       |
|               | 1.741 (44.23) | 1.892 (48.05)                     | 1.676 (42.57) | 1.450 (36.83) | 60            |           | 71661-2936            |
|               | 1.491 (37.88) | 1.642 (41.70)                     | 1.426 (36.22) | 1.200 (30.48) | 50            |           |                       |
|               | 1.241 (31.53) | 1.392 (35.35)                     | 1.176 (29.87) | .950 (24.13)  | 40            |           |                       |
|               | .991 (25.18)  | 1.142 (29.00)                     | .925 (23.52)  | .700 (17.78)  | 30            |           |                       |
|               | .110 (2.79)   | 3.491 (88.68)                     | 3.642 (92.50) | 3.426 (87.02) | 3.200 (81.28) | 130       |                       |
| 3.241 (82.33) |               | 3.392 (86.15)                     | 3.176 (80.67) | 2.950 (74.93) | 120           |           |                       |
| 2.741 (69.63) |               | 2.892 (73.45)                     | 2.676 (67.97) | 2.450 (62.23) | 100           |           | 71661-2910            |
| 2.241 (56.93) |               | 2.392 (60.75)                     | 2.176 (55.27) | 1.950 (49.53) | 80            |           | 71661-2980            |
| 1.941 (49.31) |               | 2.092 (53.13)                     | 1.875 (47.65) | 1.650 (41.91) | 68            |           | 71661-2968            |
| 1.741 (44.23) |               | 1.892 (48.05)                     | 1.676 (42.57) | 1.450 (36.83) | 60            |           | 71661-2960            |
| 1.491 (37.88) |               | 1.642 (41.70)                     | 1.426 (36.22) | 1.200 (30.48) | 50            |           | 71661-2950            |
| 1.241 (31.53) |               | 1.392 (35.35)                     | 1.176 (29.87) | .950 (24.13)  | 40            |           |                       |
| .991 (25.18)  |               | 1.142 (29.00)                     | .925 (23.52)  | .700 (17.78)  | 30            |           | 71661-2930            |

|   |                               |   |  |  |  |   |              |                        |  |
|---|-------------------------------|---|--|--|--|---|--------------|------------------------|--|
| <b>SEE SHEET 1</b><br>EC NO: LUCP2009-1254<br>2008/12/19<br>DRWNS/IBARRA<br>2009/01/06<br>CHK/BBARKER<br>APPR/SMILLER<br>2009/01/06 | QUALITY SYMBOLS<br>▽=0<br>▽=0 | GENERAL TOLERANCES (UNLESS SPECIFIED)   |  | DIMENSION STYLE<br>IN/MM   |  | SCALE   | DESIGN UNITS | THIRD ANGLE PROJECTION |  |
|   |                               | 4 PLACES ±--- ±---<br>3 PLACES ±--- ±.010<br>2 PLACES ±0.25 ±---<br>1 PLACE ±--- ±---   |  | DRAWN BY DATE<br>RKADAMS 2004/08/18<br>CHECKED BY DATE<br>BBARKER 2004/08/18<br>APPROVED BY DATE<br>SMILLER 2004/08/18 |  | TITLE<br>SALES ASSEMBLY<br>EBBI 50D RIGHT ANGLE<br>PLUG CONNECTOR |              | MOLEX INCORPORATED     |  |
|   |                               | DRAFT WHERE APPLICABLE MUST REMAIN WITHIN DIMENSIONS  |  | MATERIAL NO.<br>SEE TABLE  |  | DOCUMENT NO.<br>SD-71661-007                                      |              | SHEET NO.<br>2 OF 2    |  |
|   |                               | THIS DRAWING CONTAINS INFORMATION THAT IS PROPRIETARY TO MOLEX INCORPORATED AND SHOULD NOT BE USED WITHOUT WRITTEN PERMISSION |  |  |  |   |              |                        |  |

20 19 18 17 16 15 14 13 12 11 10 9 8 7 6 5 4 3 2 1



TRAY PACK  
PER SPEC.  
PK-10873-084+  
END DETAIL  
OPTION 'A'

| Circuit     | Dimension     |               |               |               |     | Item No.   |
|-------------|---------------|---------------|---------------|---------------|-----|------------|
|             | 30            | 50            | 100           | 130           | 150 |            |
| .125 (3.18) | 3.491 (88.68) | 3.642 (92.50) | 3.426 (87.02) | 3.200 (81.28) | 130 |            |
|             | 3.241 (82.33) | 3.392 (86.15) | 3.176 (80.67) | 2.950 (74.93) | 120 |            |
|             | 2.741 (69.63) | 2.892 (73.45) | 2.676 (67.97) | 2.450 (62.23) | 100 |            |
|             | 2.241 (56.93) | 2.392 (60.75) | 2.176 (55.27) | 1.950 (49.53) | 80  |            |
|             | 1.941 (49.31) | 2.092 (53.13) | 1.875 (47.65) | 1.650 (41.91) | 68  |            |
|             | 1.741 (44.23) | 1.892 (48.05) | 1.676 (42.57) | 1.450 (36.83) | 60  | 71661-2936 |
| .110 (2.79) | 3.491 (88.68) | 3.642 (92.50) | 3.426 (87.02) | 3.200 (81.28) | 130 |            |
|             | 3.241 (82.33) | 3.392 (86.15) | 3.176 (80.67) | 2.950 (74.93) | 120 |            |
|             | 2.741 (69.63) | 2.892 (73.45) | 2.676 (67.97) | 2.450 (62.23) | 100 | 71661-2910 |
|             | 2.241 (56.93) | 2.392 (60.75) | 2.176 (55.27) | 1.950 (49.53) | 80  | 71661-2980 |
|             | 1.941 (49.31) | 2.092 (53.13) | 1.875 (47.65) | 1.650 (41.91) | 68  | 71661-2968 |
|             | 1.741 (44.23) | 1.892 (48.05) | 1.676 (42.57) | 1.450 (36.83) | 60  | 71661-2960 |
| E           | 1.491 (37.88) | 1.642 (41.70) | 1.426 (36.22) | 1.200 (30.48) | 50  | 71661-2950 |
|             | 1.241 (31.53) | 1.392 (35.35) | 1.176 (29.87) | .950 (24.13)  | 40  |            |
|             | .991 (25.18)  | 1.142 (29.00) | .925 (23.52)  | .700 (17.78)  | 30  | 71661-2930 |
|             |               |               |               |               |     |            |
|             |               |               |               |               |     |            |
|             |               |               |               |               |     |            |

|  |                     |   |                        |   |   |                     |                      |                        |
|--|---------------------|---|------------------------|---|---|---------------------|----------------------|------------------------|
| ADD 71661-2960<br>EC NO: UCP2008-047<br>DRWN: SBARRA 2007/08/29<br>CHK: BBARKER 2007/09/14<br>APPR: SMILLER 2007/09/14 | QUALITY SYMBOLS<br> | GENERAL TOLERANCES (UNLESS SPECIFIED)           |                        | DIMENSION STYLE<br>IN/MM  |   | SCALE<br>---        | DESIGN UNITS<br>INCH | THIRD ANGLE PROJECTION |
|  |                     | 4 PLACES ± .010 ± .010                          | DRAWN BY<br>RKADAMS    | DATE<br>08/18/2004  | TITLE<br>SALES ASSEMBLY<br>EBB1 50D RIGHT ANGLE<br>PLUG CONNECTOR |                     |                      |                        |
|  |                     | 3 PLACES ± .010 ± .010                          | CHECKED BY<br>BBARKER  | DATE<br>08/18/2004  | MOLEX INCORPORATED  |                     |                      |                        |
|  |                     | 2 PLACES ± 0.25 ± .010<br>1 PLACE ± .010 ± .010 | APPROVED BY<br>SMILLER | DATE<br>08/18/2004  | MATERIAL NO.<br>DOCUMENT NO.<br>SD-71661-007                      |                     |                      |                        |
| DRAFT WHERE APPLICABLE<br>MUST REMAIN WITHIN DIMENSIONS  |                     | SEE TABLE                                       |                        | THIS DRAWING CONTAINS INFORMATION THAT IS PROPRIETARY TO MOLEX INCORPORATED AND SHOULD NOT BE USED WITHOUT WRITTEN PERMISSION |   | SHEET NO.<br>2 OF 2 |                      |                        |

E D C B A CKT ('N') ITEM NUMBER

19 18 17 16 15 14 13 12 11 10 9 8 7 6 5 4 3 2 1