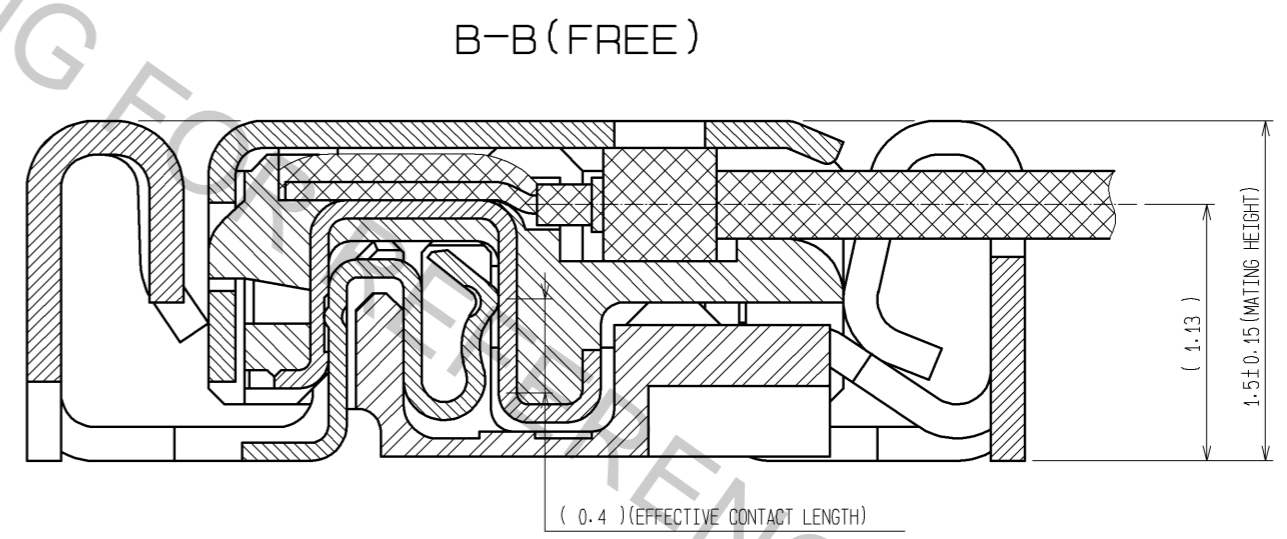
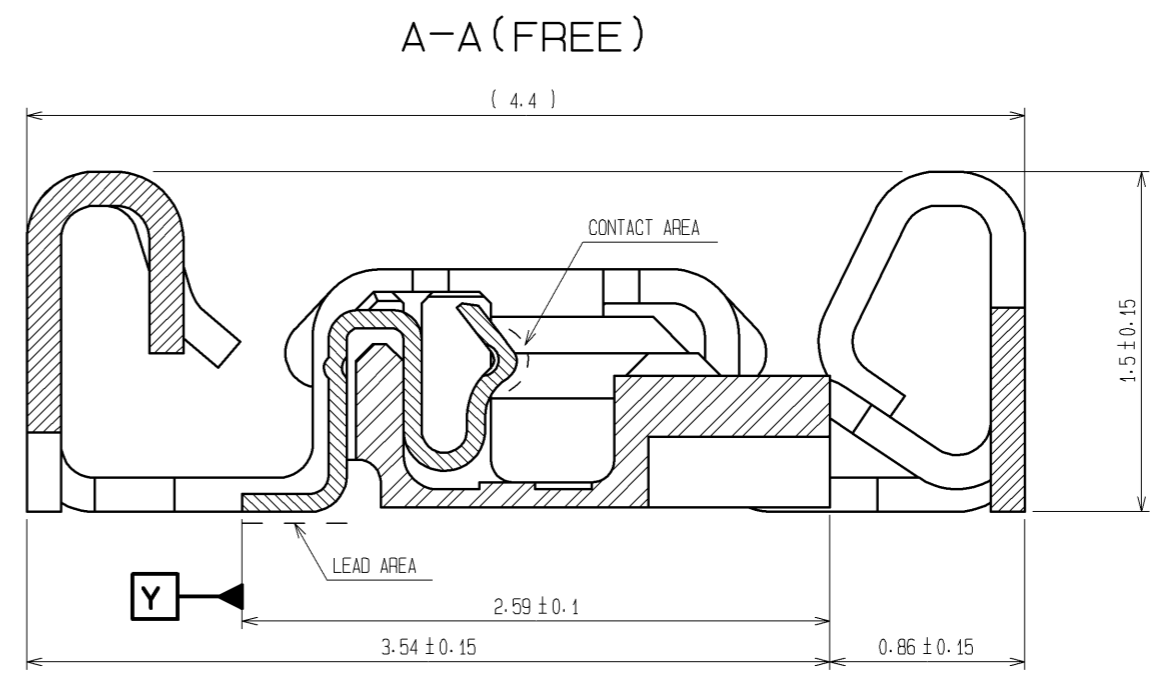


- NOTES**
- LEAD CO-PLANARITY SHALL BE 0.1mm MAX.
 - STIFFENER IS REQUIRED FOR MOUNTING ONTO FPC IN ORDER TO AVOID STRESS BY FPC SLACKING TO MOUNTED CONNECTOR.
 - LOT No. INFORMATION IS SHOWN IN THE TABLE.
EXAMPLE:8GFD
-YEAR:2008 MONTH:July DAY:15 LINE No.:4
 - UNMATING SHALL BE DONE WITH THE SPECIFIC EXTRACTION TOOL.
 - SOLDERING REWORK IS NOT POSSIBLE SINCE SOLDERING LEADS ARE COVERED BY METAL SHIELDING.

YEAR		MONTH		DAY						LINE No.	
YEAR	CODE	MONTH	CODE	DAY	CODE	DAY	CODE	DAY	CODE	LINE No.	CODE
10	0	Jan	A	1	1	11	B	21	M	1	A
11	1	Feb	B	2	2	12	C	22	N	2	B
12	2	Mar	C	3	3	13	D	23	P	3	C
13	3	Apr	D	4	4	14	E	24	Q	4	D
14	4	May	E	5	5	15	F	25	R	5	E
15	5	Jun	F	6	6	16	G	26	S	6	F
16	6	Jul	G	7	7	17	H	27	T	7	G
17	7	Aug	H	8	8	18	J	28	U	8	H
08	8	Sep	I	9	9	19	K	29	V	9	I
09	9	Oct	J	10	A	20	L	30	W	10	J
		Nov	K			31	X				
		Dec	L								

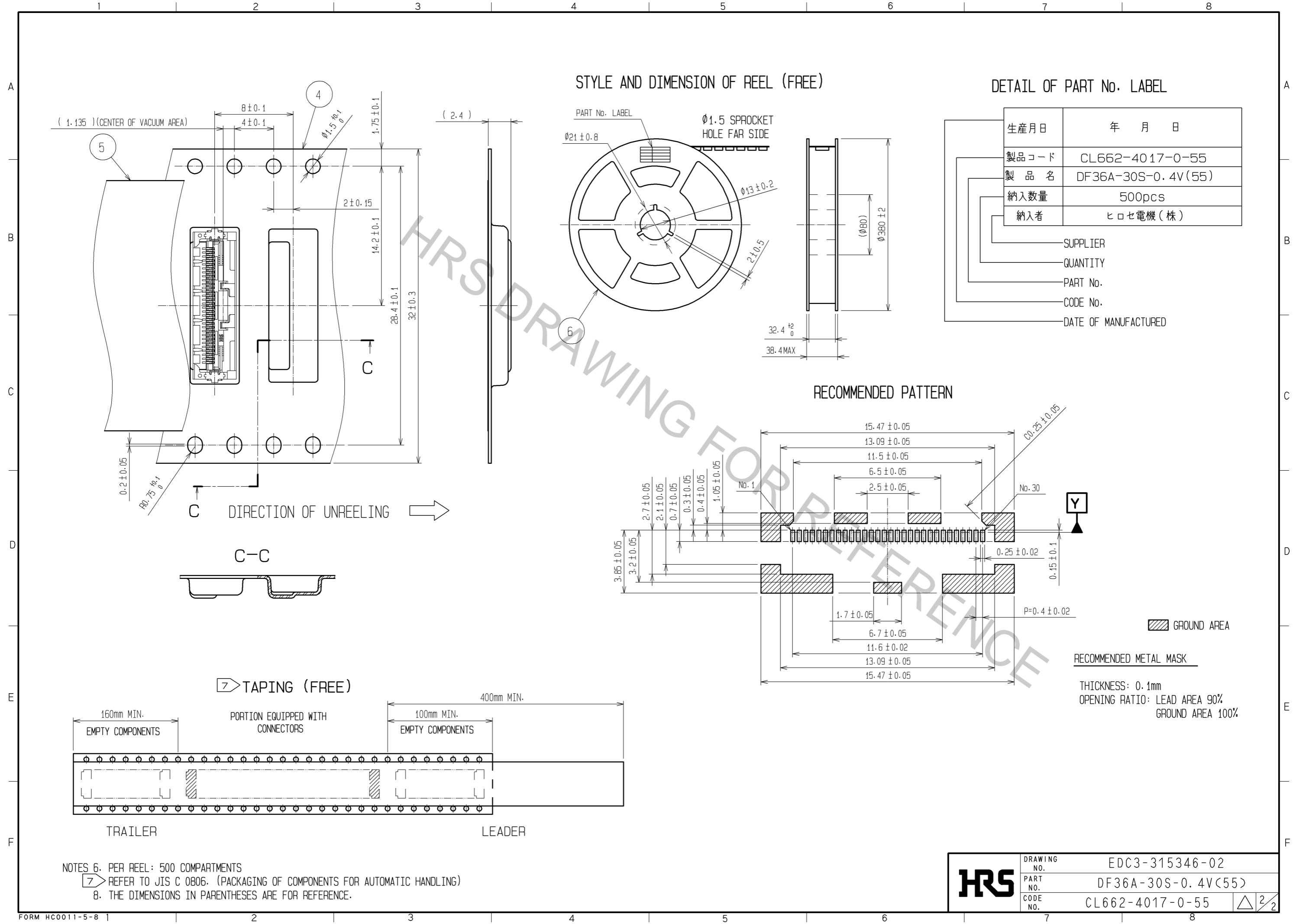


NO.	MATERIAL	FINISH . REMARKS	NO.	MATERIAL	FINISH . REMARKS
2	LCP	UL94V-0 . BLACK	6	PS	BLACK
			5	POLYESTER	CLEAR
1	PHOSPHOR BRONZE	CONTACT AREA : Gold PLATING 0.3µm min LEAD AREA : Gold PLATING 0.1µm min UNDER PLATING : Nickel PLATING 2µm min	4	PS	CLEAR
			3	PHOSPHOR BRONZE	WHOLE AREA : Tin PLATING 1µm min UNDER PLATING : Copper PLATING 0.2µm min

UNITS	SCALE	COUNT	DESCRIPTION OF REVISIONS	DESIGNED	CHECKED	DATE
mm	5 : 1	△	APPROVED : KH. IKEDA 14.11.06 CHECED : MH. TSUCHIDA 14.11.06 DESIGNED : IO. DENPOUYA 14.11.06 DRAWN : YJ. HAGA 14.10.23			

DRAWING NO.	PART NO.	CODE NO.
EDC3-315346-02	DF36A-30S-0.4V(55)	CL662-4017-0-55

Apr.1.2017 Copyright 2017 HIROSE ELECTRIC CO., LTD. All Rights Reserved.



NOTES 6. PER REEL: 500 COMPARTMENTS
 7. REFER TO JIS C 0806. (PACKAGING OF COMPONENTS FOR AUTOMATIC HANDLING)
 8. THE DIMENSIONS IN PARENTHESES ARE FOR REFERENCE.

HRS	DRAWING NO.	EDC3-315346-02
	PART NO.	DF36A-30S-0.4V(55)
	CODE NO.	CL662-4017-0-55
		△ 2/2