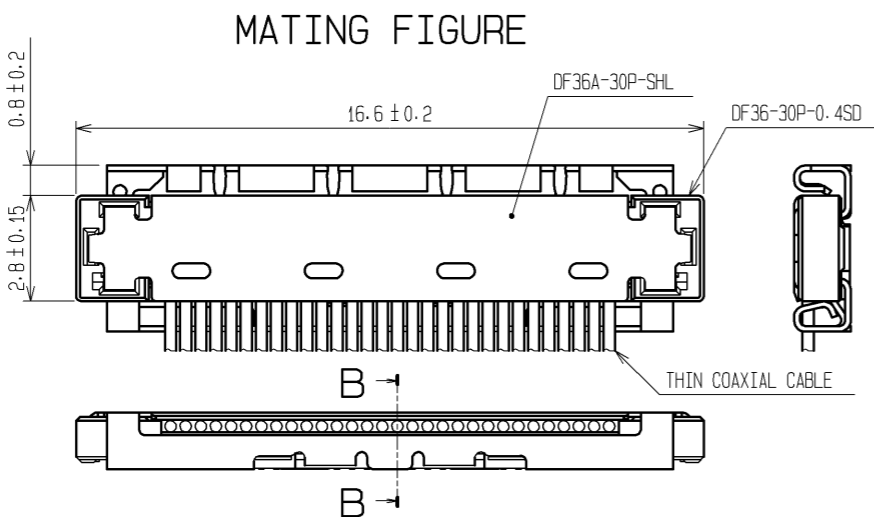
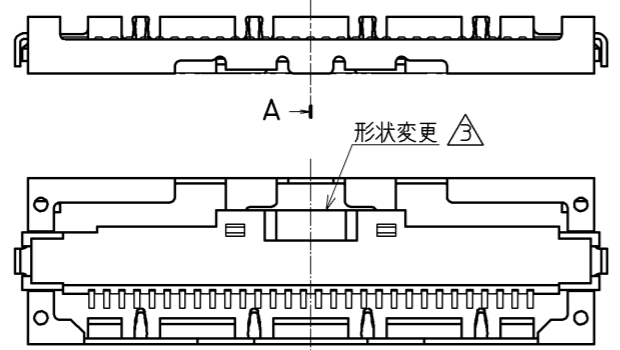
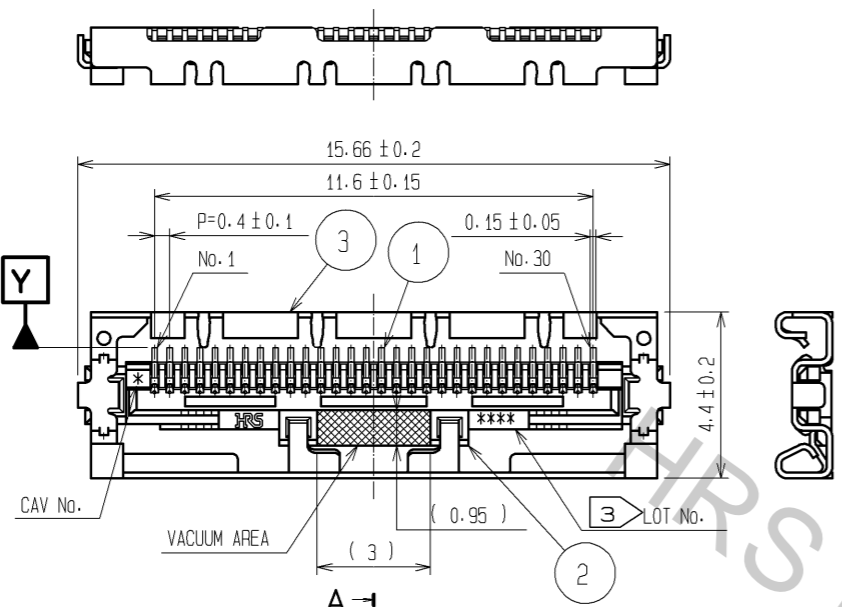


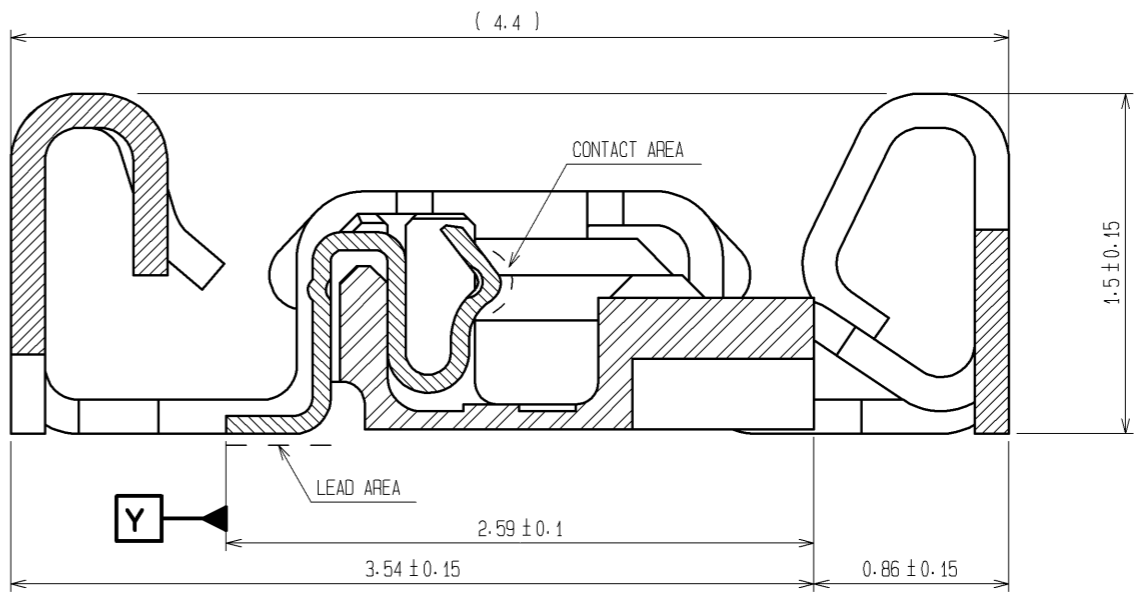
Apr.1.2017 Copyright 2017 HIROSE ELECTRIC CO., LTD. All Rights Reserved.



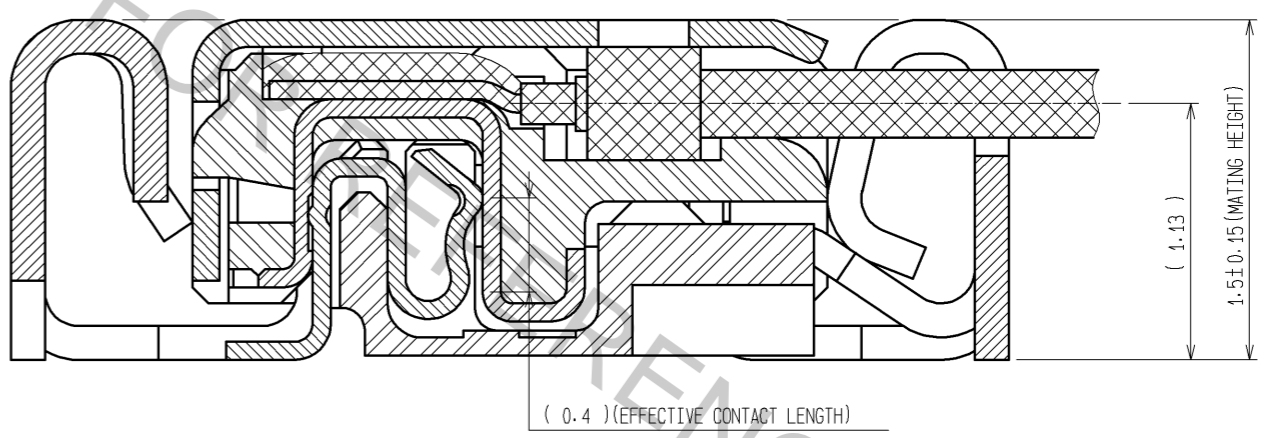
- NOTES**
- LEAD CO-PLANARITY SHALL BE 0.1mm MAX.
 - STIFFENER IS REQUIRED FOR MOUNTING ONTO FPC IN ORDER TO AVOID STRESS BY FPC SLACKING TO MOUNTED CONNECTOR.
 - LOT No. INFORMATION IS SHOWN IN THE TABLE.
EXAMPLE:8GFD
-YEAR:2008 MONTH:July DAY:15 LINE No.:4
 - UNMATING SHALL BE DONE WITH THE SPECIFIC EXTRACTION TOOL.
 - SOLDERING REWORK IS NOT POSSIBLE SINCE SOLDERING LEADS ARE COVERED BY METAL SHIELDING.

YEAR		MONTH		DAY						LINE No.	
YEAR	CODE	MONTH	CODE	DAY	CODE	DAY	CODE	DAY	CODE	LINE No.	CODE
10	0	Jan	A	1	1	11	B	21	M	1	A
11	1	Feb	B	2	2	12	C	22	N	2	B
12	2	Mar	C	3	3	13	D	23	P	3	C
13	3	Apr	D	4	4	14	E	24	Q	4	D
14	4	May	E	5	5	15	F	25	R	5	E
15	5	Jun	F	6	6	16	G	26	S	6	F
16	6	Jul	G	7	7	17	H	27	T	7	G
17	7	Aug	H	8	8	18	J	28	U	8	H
08	8	Sep	I	9	9	19	K	29	V	9	I
09	9	Oct	J	10	A	20	L	30	W	10	J
		Nov	K			31	X				
		Dec	L								

A-A (30:1) △

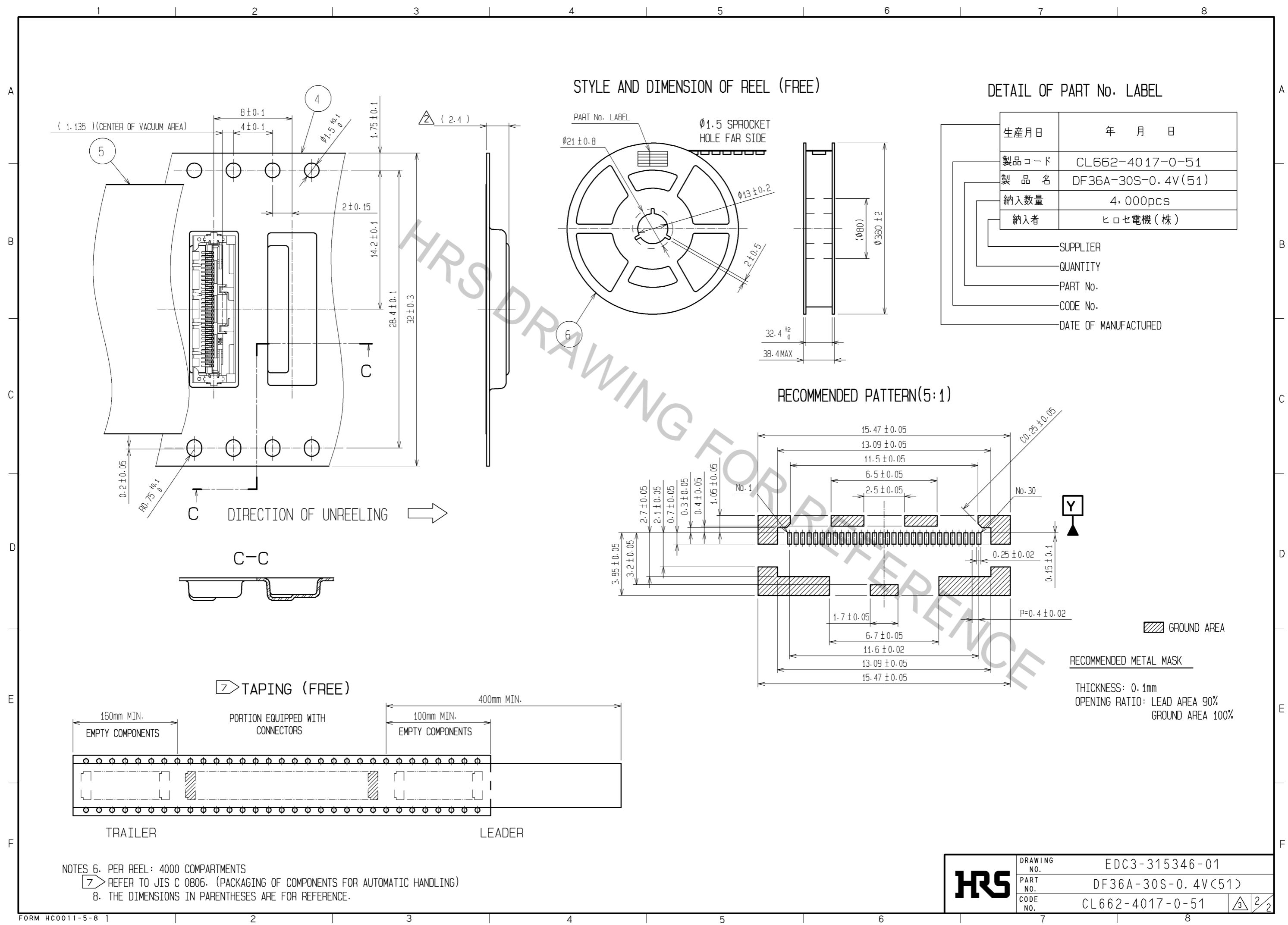


B-B (30:1) △



2	LCP	UL94V-0	6	PS	BLACK
			5	POLYESTER	CLEAR
1	PHOSPHOR BRONZE	CONTACT AREA : Au PLATING 0.3µm min LEAD AREA : Au PLATING 0.1µm min UNDER PLATING : Ni PLATING 2µm min	4	PS	CLEAR
			3	PHOSPHOR BRONZE	WHOLE AREA : Sn PLATING 1µm min UNDER PLATING : Cu PLATING 0.2µm min
NO.	MATERIAL	FINISH . REMARKS	NO.	MATERIAL	FINISH . REMARKS
UNITS	mm	SCALE	5 : 1	COUNT	1
DESCRIPTION OF REVISIONS			DESIGNED	SI. ISHII	DATE
DIS-H-003181			CHECKED	HK. UMEHARA	08.07.29
APPROVED : TY. OMA			07.04.06	DRAWING NO. EDC3-315346-01	
CHECED : TS. SAKATA			07.04.06	PART NO. DF36A-30S-0.4V(51)	
DESIGNED : MN. KENJO			07.04.05	CODE NO. CL662-4017-0-51	
DRAWN : MN. KENJO			07.04.05		

Apr.1.2017 Copyright 2017 HIROSE ELECTRIC CO., LTD. All Rights Reserved.



STYLE AND DIMENSION OF REEL (FREE)

DETAIL OF PART No. LABEL

生産月日	年 月 日
製品コード	CL662-4017-0-51
製品名	DF36A-30S-0.4V(51)
納入数量	4,000pcs
納入者	ヒロセ電機(株)

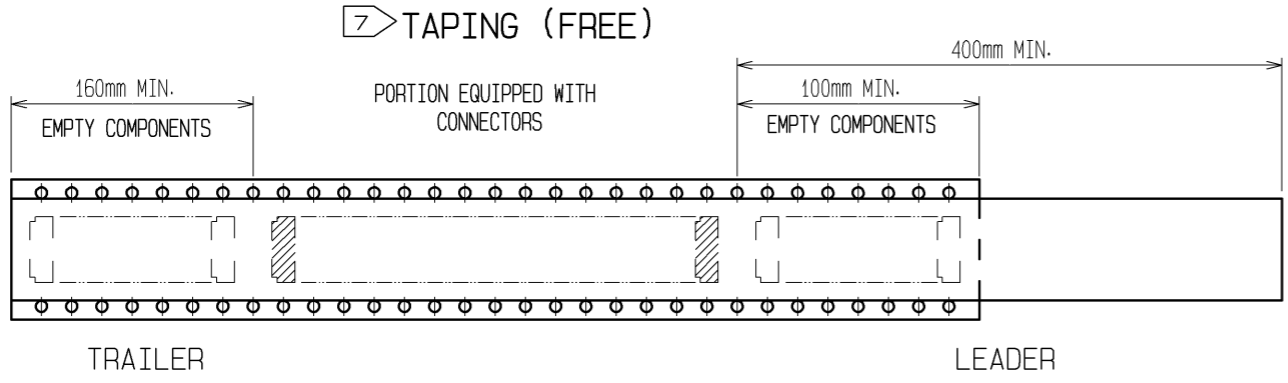
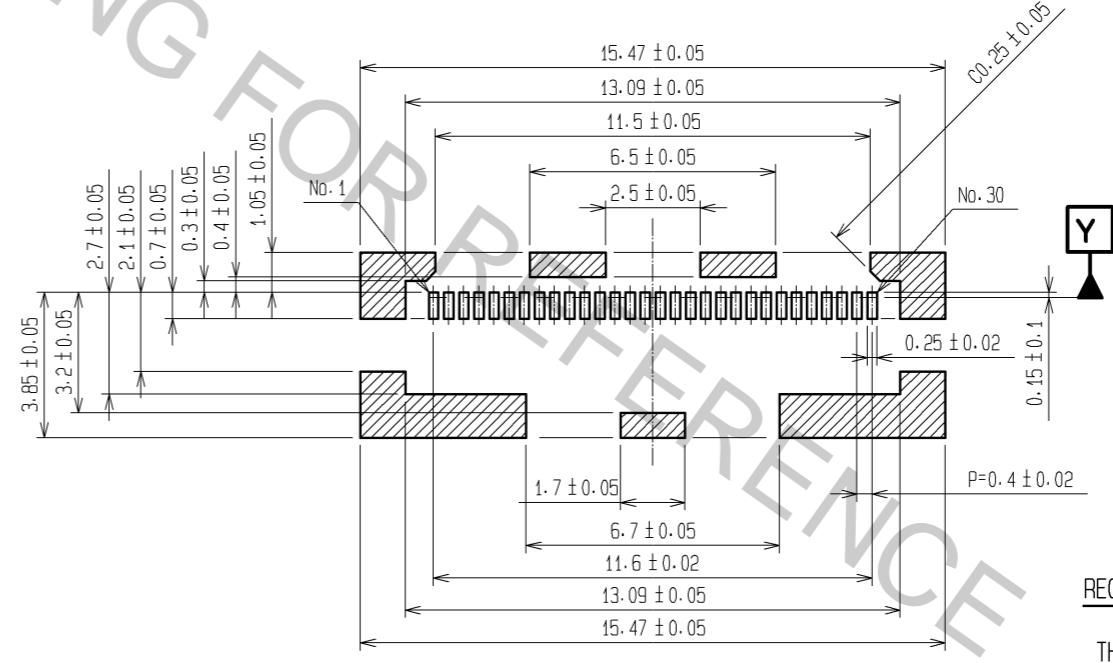
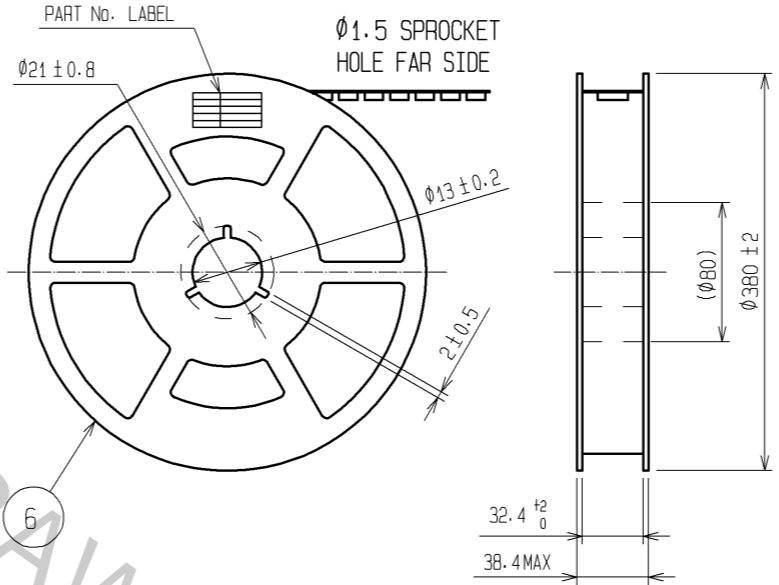
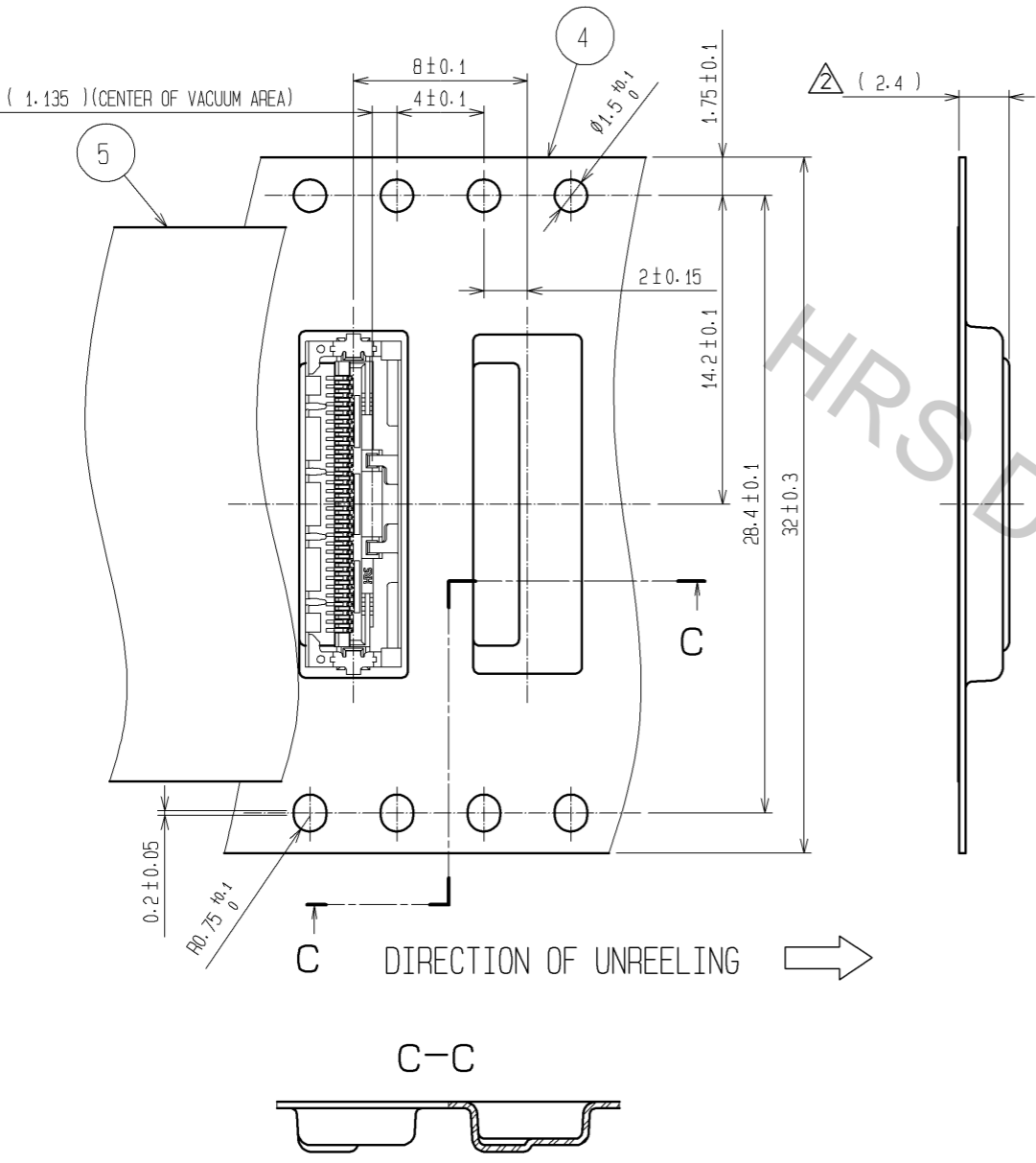
SUPPLIER
 QUANTITY
 PART No.
 CODE No.
 DATE OF MANUFACTURED

RECOMMENDED PATTERN(5:1)

GROUND AREA

RECOMMENDED METAL MASK

THICKNESS: 0.1mm
 OPENING RATIO: LEAD AREA 90%
 GROUND AREA 100%



NOTES 6. PER REEL: 4000 COMPARTMENTS
 7 REFER TO JIS C 0806. (PACKAGING OF COMPONENTS FOR AUTOMATIC HANDLING)
 8. THE DIMENSIONS IN PARENTHESES ARE FOR REFERENCE.

HRS	DRAWING NO.	EDC3-315346-01
	PART NO.	DF36A-30S-0.4V(51)
	CODE NO.	CL662-4017-0-51
		3/2