

PART NUMBER	REV	FIRST USED
567924-1	A	854040-3

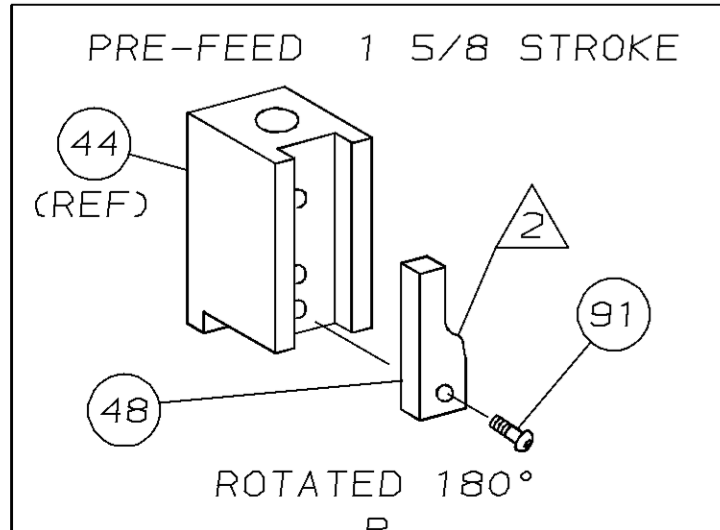
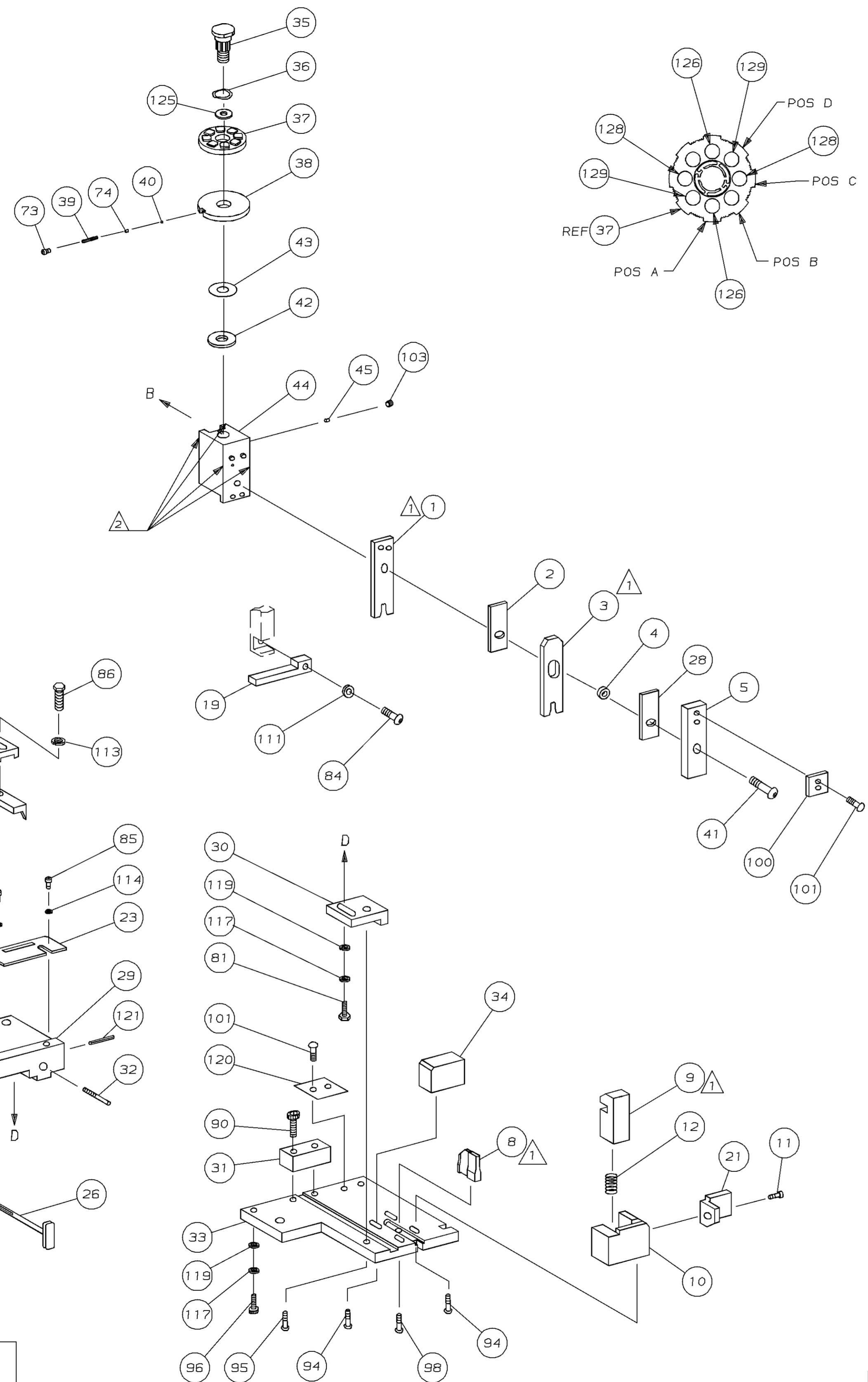
TERMINAL NAME: MINI AMP-IN™ TERMINAL			
VISIBLE PAD LTR	CRIMPING DATA		WIRE SIZE
	CRIMP HEIGHT		
A	.042 ±.002 [1.07 ±0.05mm]	18	
B	.036 ±.002 [0.91 ±0.05mm]	20	
C	.032 ±.002 [0.81 ±0.05mm]	22	
D	NOT	USED	
CRIMP	SIZE	TYPE	RANGE
WIRE	.062 [1.57mm]	F	22-18
INSUL	.110 [2.79mm]	F	.060-.110

WIRE STRIP LENGTH	TERM	APPL	SPEC	FEED	APPL INSTRUCTION	SET UP GAGE	LAYOUT
-	-	-	-	.330	SEE CUSTOMER MANUAL	NONE	666
2	-	C	5-354779-0	PIN, WIRE DISC (.3240)D	129		
2	-	C	3-354779-8	PIN, WIRE DISC (.3180)C	128		
					127		
2	-	C	5-354779-8	PIN, WIRE DISC (.3280)A	126		
1	-	A	986950-1	WASHER, FLAT PRECISION	125		
1	-	A	217238-3	GENERAL INSTRUCTION PACKAGE	124		
					123		
					122		
1	-	A	4-21028-0	PIN, SLT SPR (#.093x.75) ST GDE PL	121		
1	-	B	690701-2	PLATE, SERIAL NO.	120		
2	-	A	21899-2	WASHER, FLAT (#10) S G ADJ BLK	119		
					118		
2	-	A	21024-5	WASHER, LOCK (#10) ADJ BLOCK	117		
					116		
					115		
2	-	A	21024-2	WASHER, LOCK (#4) FRONT STP GUIDE	114		
REF	-	A	21024-4	WASHER, LOCK (#8) FEED FINGER	113		
					112		
REF	-	A	21024-4	WASHER, LOCK (#8) STRIPPER	111		
					110		
					109		
					108		
					107		
					106		
					105		
					104		
1	-	A	21009-2	SCR, SKT SET (1/4-20x.25 LW) RAM	103		
					102		
4	-	A	21017-2	SCR, DRIVE (#2x.19) ID PLATE	101		
1	-	B	819347-1	PLATE, IDENTIFICATION	100		
2	-	A	3-21002-0	SCR, BHC (10-32x.88) DRAG	99		
1	-	A	22733-8	SCR, BHC (8-32x.38 LW) ANVIL	98		
					97		
1	-	A	3-21000-8	SCR, SHC (10-32x.88) MOUNTING	96		
1	-	A	2-21002-7	SCR, BHC (10-32x.50) S G ADJ BLK	95		
4	-	A	2-21002-2	SCR, BHC (8-32x.50) SHEAR-TERM SUP	94		
2	-	A	2-21002-1	SCR, BHC (8-32x.38) R STP GDE	93		
					92		
1	-	A	1-21002-7	SCR, SHC (6-32x.50) CAM	91		
2	-	A	2-21000-7	SCR, SHC (8-32x.50) SCR BLK	90		
					89		
					88		
					87		
REF	-	A	2-22603-0	SCR, HEX HD (8-32x.31) FEED FINGER	86		
2	-	A	1-21000-3	SCR, SHC (4-40x.25) F ST GUIDE	85		
REF	-	A	22733-9	SCR, BHC (8-32x.50 SL) STRIPPER	84		
					83		
					82		
1	-	A	3-22603-1	SCR, HEX (10-32x.38) S G ADJ BL	81		
					80		
					79		
					78		
2	-	B	463310-5	BLADE, STRIPPING (#20)	77		
					76		
					75		
1	-	A	690603-1	SPRING, ASSIST	74		
1	-	A	23030-1	SCR, SKT CAP (6-32x.25) CP DSC	73		
					72		
					71		

QTY REQD PER ASSY	U/M	DWG SIZE	PART NO	DESCRIPTION	ITEM NO
PARTS LIST					

QTY REQD PER ASSY	U/M	DWG SIZE	PART NO	DESCRIPTION	ITEM NO
REVISION OF EACH ASSY NO (WHEN BLANK, USE DWG REVISION)					
PARTS LIST					
1	-	A	5-22280-0	SPRING, SHEAR	12
1	-	B	690461-2	STOP, SHEAR (FRONT)	11
1	-	B	462548-1	HOLDER, SHEAR (FRONT) SP	10
1	-	B	462547-1	SHEAR, FLOAT (FRONT) SP	9
1	-	C	458834-7	ANVIL	8
					7
					6
1	-	A	462838-1	DEPRESSOR, SHEAR (FRONT) SP	5
1	-	B	238011-7	SPACER, BLOCK CRIMPER	4
1	-	C	2-456134-2	CRIMPER, INSULATION	3
1	-	C	455888-1	SPACER, CRIMPER	2
1	-	C	458141-2	CRIMPER, WIRE	1

QTY REQD PER ASSY	U/M	DWG SIZE	PART NO	DESCRIPTION	ITEM NO
REVISION OF EACH ASSY NO (WHEN BLANK, USE DWG REVISION)					
PARTS LIST					
DIMENSIONS IN INCHES. DO NOT SCALE PRINT. TOLERANCES UNLESS OTHERWISE SPECIFIED.					
DR 6/6/96 APP 6/6/96 T ELBIN					
R.O. WILSON					
CHK 6/6/96 REL 7/16/96 B. MORGAN					
C. ERISMAN					
NAME STRIPPER CRIMPER APPLICATOR					
MACHINE REF STRIPPER CRIMPER					
SCALE - DWG NO 567924 SHEET 1 OF 1 REV A					



- 1 RECOMMENDED SPARE PARTS.
- 2 GREASE LIGHTLY.
- 3 ITEM NOT SHOWN

THIS DRAWING IS A CONTROLLED DOCUMENT FOR AMP INCORPORATED. IT IS SUBJECT TO CHANGE AND THE CONTROLLING ENGINEERING ORGANIZATION SHOULD BE CONTACTED FOR THE LATEST REVISION.

THIS INFORMATION IS CONFIDENTIAL AND IS DISCLOSED TO YOU ON CONDITION THAT NO FURTHER DISCLOSURE IS MADE BY YOU TO OTHER THAN AMP PERSONNEL WITHOUT WRITTEN AUTHORIZATION FROM AMP INCORPORATED, HARRISBURG, PA.

LOC A
DIST 66

567924