

PART NUMBER	REV	FIRST USED	TERMINATOR	FEED TYPE	DESCRIPTION
1339568-1	A		BENCH & LEADMAKER	MECH POST FEED	HD-I APPLICATOR
7-1339568-1	A		BENCH & LEADMAKER	MECH POST FEED	-1 AND SPARE PARTS
7-1339568-7	A		-	-	SPARE PARTS KIT

CRIMP DATA AMP TERMINAL AMP CRIMP SPECS

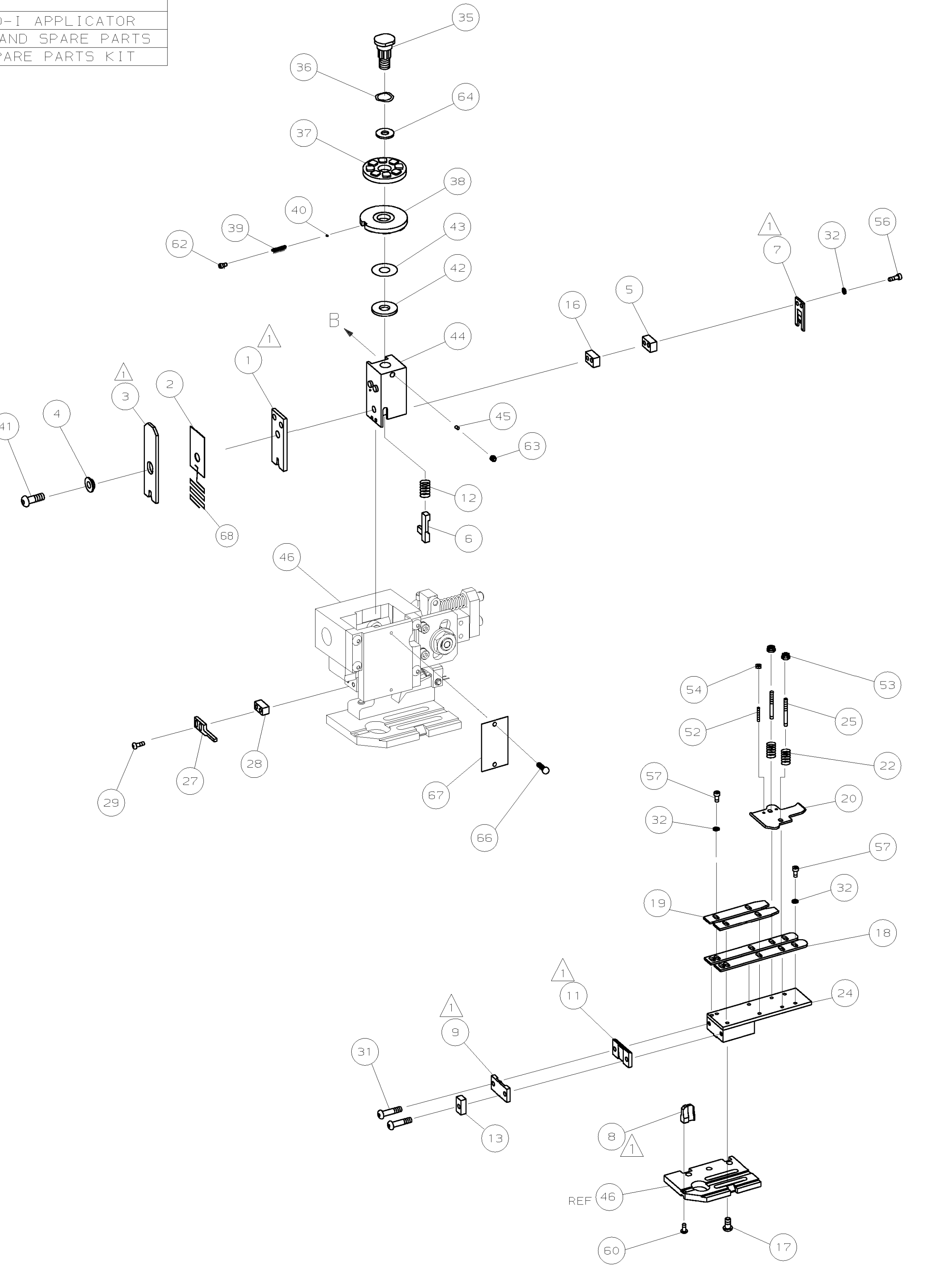
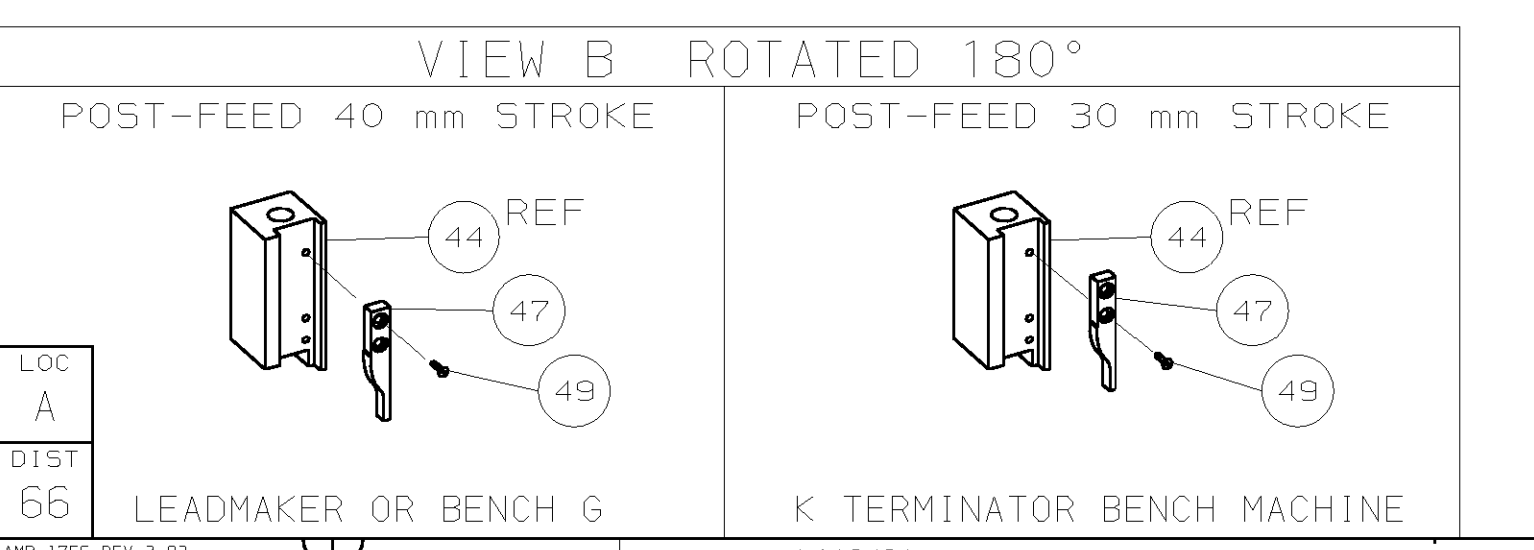
TERMINAL NAME: .250 5RS FAST-IN-ON TAB			
CRIMP	SIZE	TYPE	RANGE
WIRE	3.05 [(.120 IN)]	F	14-12 AWG
INSUL	4.57 [(.180 IN)]	0	2.80-4.32 [(.110-.170 IN)]
WIRE STRIP LENGTH		APPL INSTRUCTION	
4.80-5.60 [(.189-.220 IN)]		408-8323	
TERMINAL APPL SPEC		114-3118	FEED 30.10 [1.185 IN]

TERMINALS APPLIED

TERMINAL	SIZE	TYPE	LENGTH	APPL
160786	-	-	-	-
-	-	-	-	-
-	-	-	-	-
-	-	-	-	-
-	-	-	-	-
-	-	-	-	-
-	-	-	-	-
-	-	-	-	-
-	-	-	-	-
-	-	-	-	-

WIRE SIZE	CRIMP HEIGHT	PIN PN AND LENGTH [IN]
mm ² AWG		
12 AWG	2.24 ±0.05 [.088 ±.002 IN]	6-354778-3 [.2810]
3.00mm ²	2.16 ±0.05 [.085 ±.002 IN]	6-354778-9 [.2840]
2.50mm ²	2.03 ±0.05 [.080 ±.002 IN]	7-354778-9 [.2890]
14 AWG	1.91 ±0.05 [.075 ±.002 IN]	9-354778-0 [.2945]

- 2. GREASE RAM, CAM, CAM FOLLOWER AND FEED ROD LIGHTLY.
- 3. LUBRICATE DAILY PER THE APPLICATOR INSTRUCTION SHEET SUPPLIED WITH THE APPLICATOR.



REV	QTY	PART NO	DESCRIPTION	ITEM NO		
-	1	1	1339568	PRINT, APPLICATOR LOG SHEET	73	
-	1	1	1338705-2	DOCUMENTATION PACKAGE	71	
-	-	-	-	-	70	
-	-	-	-	-	69	
-	1	1	576266-4	DEPRESSOR, WIRE	68	
-	1	1	461264-1	PLATE, IDENTIFICATION	67	
-	2	2	21017-2	SCR,DRIVE (#2X.19) ID PLATE	66	
-	-	-	-	-	65	
-	1	1	986950-1	WASHER, FLAT PRECISION	64	
-	1	1	3-18031-0	SCR,SKT SET (M6X6) RAM	63	
-	1	1	18023-9	SCR,SKT CAP (M4X6) CP D5C	62	
-	-	-	-	-	61	
-	1	1	18024-7	SCR,BHC (M4X10) ANVIL	60	
-	-	-	-	-	59	
-	-	-	-	-	58	
-	6	6	18023-9	SCR,SHC (M4X6) STRIP GUIDE	57	
-	2	2	1-18023-4	SCR,SHC (M4X20) SLUG BLADE	56	
-	-	-	-	-	55	
-	2	2	18029-1	NUT,HEX (M3) DRAG	54	
-	2	2	986965-1	NUT,HEX SL (M4) DRAG STUD	53	
-	2	2	2-18032-2	SCR,SKT SET (M3X10) DRAG	52	
-	-	-	-	-	51	
-	-	-	-	-	50	
-	1	1	18024-3	SCR,BHC (M3X10) CAM	49	
-	-	-	-	-	48	
-	1	1	1338676-1	CAM, POST-FEED 30 & 40 mm ST	47	
-	1	1	1338662-1	APPLICATOR, BASIC (SUBASSY)	46	
-	1	1	690191-1	PLUG, NYLON	45	
-	1	1	1320998-1	RAM	44	
-	1	1	690125-1	WASHER, LAMINATED	43	
-	1	1	690124-1	WASHER, RAM	42	
-	1	1	2-18024-6	SCREW,BHC (M8X25) CRIMPER	41	
-	1	1	23241-1	BALL, STEEL	40	
-	1	1	2-22278-7	SPRING, COMPRESSION	39	
-	1	1	1320922-1	DISC, INSULATION	38	
-	1	1	354777-1	WIRE DISC, PLASTIC	37	
-	1	1	22480-5	WASHER, SPRING	36	
-	1	1	690212-1	POST, RAM	35	
-	-	-	-	-	34	
-	-	-	-	-	33	
-	8	8	18025-2	WASHER,LOCK (M4) SHEAR BL	32	
-	2	2	1-18024-0	SCR,BHC (M4X20) SHEAR PL	31	
-	-	-	-	-	30	
-	2	2	18024-8	SCR,BHC (M4X12) STRIPPER	29	
-	1	1	3-690451-2	SPACER, STRIPPER	28	
-	1	1	240639-1	STRIPPER	27	
-	-	-	-	-	26	
-	2	2	1320906-1	DRAG, STUD	25	
-	1	1	1320995-1	STRIP GUIDE	24	
-	-	-	-	-	23	
-	2	2	4-22281-1	SPRING, DRAG	22	
-	-	-	-	-	21	
-	1	1	1338665-1	DRAG, STOCK	20	
-	2	2	1338664-1	GUIDE, UPPER STRIP	19	
-	2	2	1338663-4	GUIDE, LOWER STRIP	18	
-	4	4	1-18024-8	SCR,BHC (M6X12) STRIP GD PL	17	
-	1	1	1338708-1	SPACER, SLUG BLADE	16	
-	-	-	-	-	15	
-	-	-	-	-	14	
-	1	1	1-690481-0	SPACER, HOLD DOWN	13	
-	1	1	23846-1	SPRING, HOLD DOWN	12	
-	1	1	240644-1	PLATE, REAR SHEAR	11	
-	-	-	-	-	10	
-	1	1	690482-4	PLATE, FRONT SHEAR	9	
-	1	2	1	1333220-7	ANVIL	8
-	1	1	690474-4	BLADE, SLUG	7	
-	1	1	3-455892-1	HOLD DOWN, TERMINAL	6	
-	1	1	4-240641-4	SPACER, SLUG BLADE	5	
-	1	1	238009-1	SPACER, BLOCK CRIMPER	4	
-	1	2	1	2-904741-9	CRIMPER, INSULATION	3
-	1	1	576265-5	SPACER, CRIMPER	2	
-	1	2	1	456409-7	CRIMPER, WIRE	1

REVISION OF EACH ASSY NO (WHEN BLANK, USE DWG REVISION)

DIMENSIONS: mm [INCHES]		MATL	HT TR	FIN
DO NOT SCALE PRINT.				
TOLERANCES UNLESS OTHERWISE SPECIFIED:				
1	PLC DEC ±			
2	PLC DEC ±			
3	PLC DEC ±			
ANGLES ±				
SURF TEXTURE:		✓		
REMOVE BURRS, BREAK SHARP EDGES RO.38 MAX				