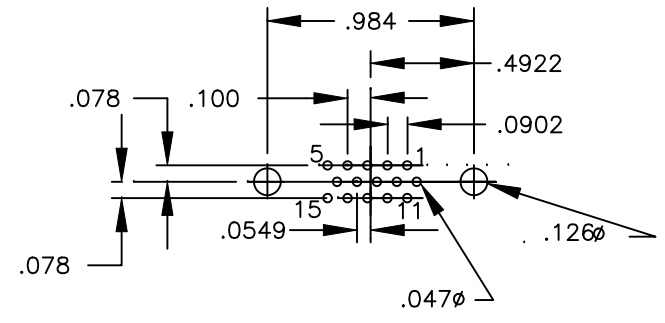
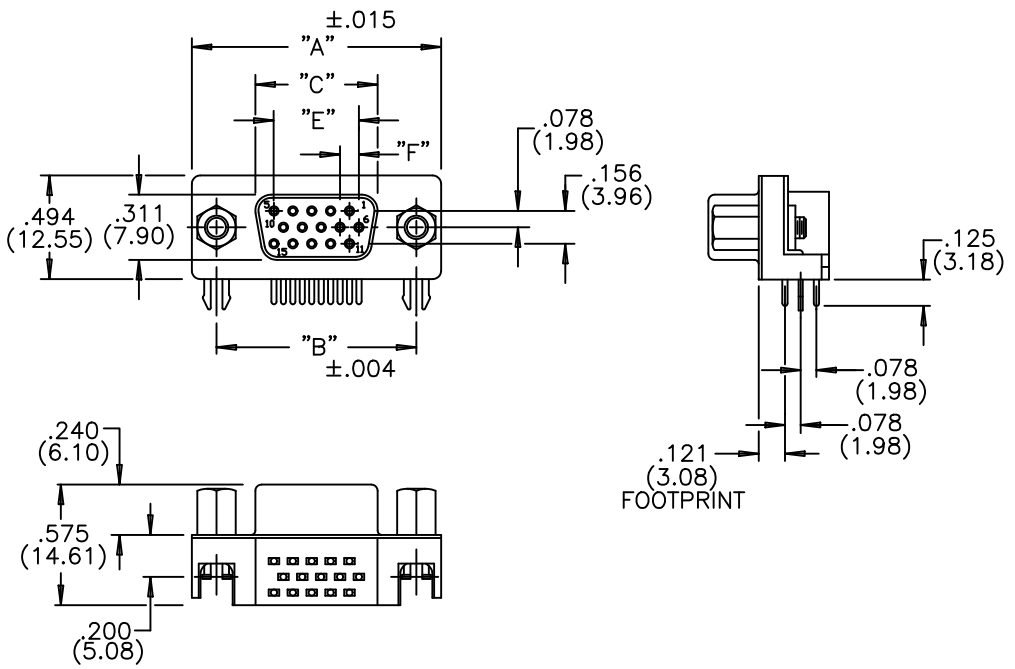


DESCRIPTION: HIGH DENSITY .125" FOOTPRINT FEMALE



MATERIALS:

INSULATOR: NYLON 9T, UL94V-0 - 260°C PROCESS TEMP. CHEMICAL RESISTANCE, COLOR BLACK

SHELL: STEEL, NICKEL PLATED

CONTACT: PHOSPHOR BRONZE  
GOLD FLASH IN MATING AREA  
TIN PLATING ON TAIL ENDS

RoHS COMPLIANT

ELECTRICAL:

CURRENT RATING: 2 AMPERES

DIELECTRIC WITHSTANDING VOLTAGE: 1000VAC rms AT SEA LEVEL

INSULATION RESISTANCE: 5000 MEGOHMS MIN.

CONTACT RESISTANCE: 10 MILLIOHMS MAX.

WORKING TEMPERATURE: -55° TO +125° C

193-015-213RYY1

SERIES \_\_\_\_\_

NUMBER OF CONTACTS \_\_\_\_\_

GENDER \_\_\_\_\_

2 = FEMALE (NO GROUND INDENTS)

PC MOUNT \_\_\_\_\_

3 = NICKEL SHELL \_\_\_\_\_

HARDWARE OPTIONS: \_\_\_\_\_

53 = 4-40 INSERT WITH BOARD LOCKS

56 = 4-40 STANDOFFS WITH BOARD LOCKS

NUMBER OF CONTACTS	"A" Inch (mm)	"B" Inch (mm)	"C" Inch (mm)	"E" Inch (mm)	"F" Inch (mm)
15	1.214 (30.84)	.984 (24.99)	.642 (16.30)	.405 (10.29)	.090 (2.29)

	THESE DRAWINGS AND SPECIFICATIONS ARE THE PROPERTY OF NorComp AND SHALL NOT BE REPRODUCED, COPIED OR USED AS THE BASIS FOR THE MANUFACTURE OF SALE OF APPARATUS WITHOUT WRITTEN PERMISSION.		DRAWN: PAM JENKINS	DATE: 9-15-05
			CHECKED:	DATE:
<h1>NorComp</h1>		SCALE:	SHEET 1 OF 1	REV 3
		DWG NO. 193-015-213RYY1		