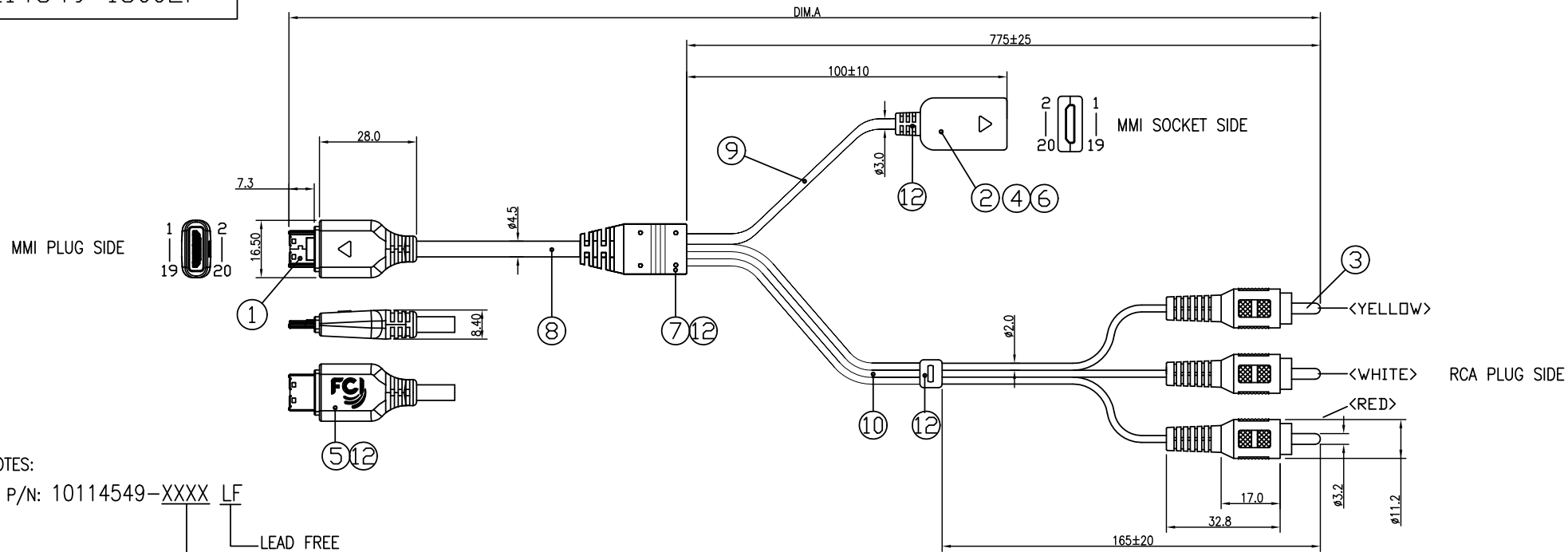




10114549-1500LF



NOTES:

- P/N: 10114549-XXXX LF
LEAD FREE
LENGTH CODE (UNIT : mm)
1500 - DIM. A: 1500±50mm
- MATERIALS

- MMI PLUG: 20PIN PLUG WITH SHELL COVER
- MMI SOCKET: 20PIN SOCKET WITH SHELL COVER, REVERSE TYPE.
- RCA PLUG(Y/W/R): RCA PLUG, GOLD PLATING ø8.2MM, COLOR: YELLOW,WHITE,RED.
- CASE UPPER/LOWER: MATERIAL ABS, WHITE.
- PCB IN PLUG: PADDLE CARD, MATERIAL FR4, 0.8MM THICKNESS.
- PCB IN SOCKET: PADDLE CARD, MATERIAL FR4, 0.8MM THICKNESS.
- PCB IN CENTER: PADDLE CARD, MATERIAL FR4, 0.8MM THICKNESS.
- CABLE OF 20PIN MMI PLUG SIDE: 24AWG*2C, 28AWG*5C, ø4.5mm, JACKET COLOR: WHITE.
- CABLE OF 20PIN MMI SOCKET SIDE: 42AWG*2C, ø3.0mm, JACKET COLOR: WHITE.
- CABLE OF VIDEO RCA PLUG SIDE: 30AWG*3C, ø2.0mm FOR 1C, JACKET COLOR: WHITE.
- MOLD: PE FOR INNERMOLD & 50P PVC FOR OVERMOLD, COLOR: WHITE.

- PRODUCT SPEC:GS-12-656; PACKING SPEC: GS-14-1485
- THE PRODUCT IS NOT INTENDED TO EXPOSED TO A MANUFACTURING SOLDER PROCESS
- ALL CABLE ASSEMBLIES SHALL BE TESTED 100% FOR CONTINUITY AS DEFINED IN WIRING LIST
CONDUCTOR RESISTOR:<=3.0 OHM; INSULATION RESISTOR:>=10M OHM
HIPOT TESTING: 300V DC, 0.01S.
- PRODUCT COMPLY WITH ROHS ENVIREMENT STANDARD,
SIX HAZARD SUBSTANCES MUST BE CONTROLLED AS FOLLOW:
Cd<1000ppm; Pb Hg Cr6+ PBBB, PBDE<1000ppm.

* PIN ASSIGNMENT

No.	20Pin MMI Plug			20Pin MMI Socket			RCA (VIDEO) PLUG	
	Pin No.	Wire	Color	Pin No.	Wire	Color	Color	Wire
1	2,12	24AWG	RED	2,12	24AWG	RED	-	-
2	9,10	24AWG	GREEN	9,10	24AWG	GREEN	-	-
3	14	28AWG	YELLOW	-	-	-	YELLOW	30AWG
4	5	28AWG	WHITE	-	-	-	WHITE	30AWG
5	6	28AWG	RED	-	-	-	RED	30AWG
6	1,20, SHELL	24AWG	BLACK	1,20, SHELL	24AWG	BLACK	SHIELD	SHIELD
			SHIELD					

mat'l. code				tolerances unless otherwise specified		CUSTOMER COPY		FCI		www.fciconnect.com	
ltr	ecn no	dr	date	linear	.X ± 0.35	projection	title	MMI TO TV CABLE ASSEMBLY			
1	P10-0008	Jerry	06/10/10		.XX ± 0.10						
2	P10-0011	Jerry	06/18/10	angles	.XXX ± 0.05	MM	product family	MMI		code	TWN
					0° ± 2°			size	dwg no		
				dr	Jerry Yi	06/18/10	scale	A4		cage code	Printed: Jun 24, 2010
				engr	Jerry Yi	06/18/10	NA				
				chr	Roger cheng	06/18/10			sheet index	1	1
				appd	Jackson Wang	06/18/10					
sheet	revision	A	B								
index	sheet	1	1								