

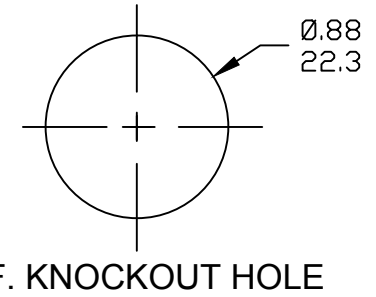
### PART NUMBER LEGEND

2R7004A20M010

↑ POLES 6-8

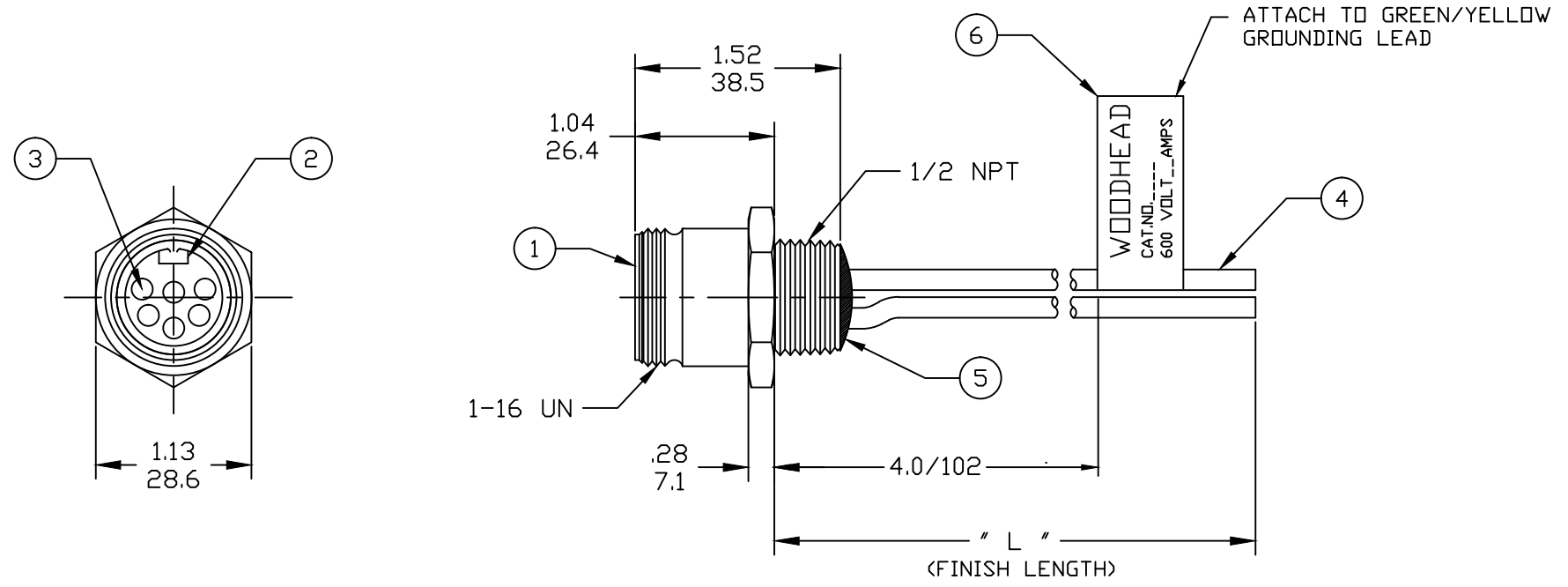
↑ FINISHED LENGTH:  
 A120= 12 IN.  
 F020= 2 FEET  
 F100= 10 FEET

M005= 0.5 METER  
 M010= 1 METER  
 M100= 10 METER



**NOTES:**

1. MATERIAL: AS NOTED
2. FINISH: AS NOTED
3. ELECTRICAL:  
 VOLTAGE: 6 THRU 8P 600V PER UL 2238  
 6P 320V PER IEC 60664  
 7 & 8P 250V PER IEC 60664  
 CURRENT: 6 & 7 POLE: 8A  
 8 POLE: 7A



4. TEMP RATING: -20°TO +105°C
5. PROTECTION: IP67 (WHEN MATED)
6. ALL DIMS ARE FOR REFERENCE UNLESS OTHERWISE NOTED

| ITEM | COMPONENT             | MATERIAL      | FINISH        |
|------|-----------------------|---------------|---------------|
| 6    | LABEL                 | VINYL         | BLACK/YELLOW  |
| 5    | POTTING               | EPOXY         |               |
| 4    | WIRE, 16 AWG, UL 1015 | PVC INSUL.    | SEE FACE VIEW |
| 3    | CONTACT PIN           | Cu ALLOY      | GOLD PLATED   |
| 2    | INSERT                | PVC           | YELLOW        |
| 1    | RECEPTACLE SHELL      | ZINC DIE-CAST | BLACK E-COAT  |

| EC NO: IPG2017-0559<br>DRWN: RSTONE 2016/12/07<br>CHKD: M ZIELIN 2016/12/12<br>APPR: BWOODMAN 2017/01/16<br>REV A | QUALITY SYMBOLS<br>$\nabla=0$<br>$\sphericalangle=0$ | GENERAL TOLERANCES (UNLESS SPECIFIED)<br><table border="1" style="width: 100%; border-collapse: collapse;"> <tr> <th></th> <th>mm</th> <th>INCH</th> </tr> <tr> <td>4 PLACES</td> <td>±---</td> <td>±---</td> </tr> <tr> <td>3 PLACES</td> <td>±---</td> <td>±---</td> </tr> <tr> <td>2 PLACES</td> <td>±---</td> <td>±---</td> </tr> <tr> <td>1 PLACE</td> <td>±---</td> <td>±---</td> </tr> </table> |      | mm  | INCH | 4 PLACES                | ±--- | ±--- | 3 PLACES | ±--- | ±--- | 2 PLACES | ±--- | ±--- | 1 PLACE | ±--- | ±--- | DIMENSION STYLE<br><b>INCH/MM</b> | SCALE<br>--- | DESIGN UNITS<br><b>INCH</b> | THIRD ANGLE PROJECTION |
|---|--|--|------|---|------|-------------------------|------|------|----------|------|------|----------|------|------|---------|------|------|-----------------------------------|--------------|-----------------------------|------------------------|
|   |  | mm   | INCH |   |      |                         |      |      |          |      |      |          |      |      |         |      |      |                                   |              |                             |                        |
|   | 4 PLACES   | ±---   | ±--- |   |      |                         |      |      |          |      |      |          |      |      |         |      |      |                                   |              |                             |                        |
|   | 3 PLACES   | ±---   | ±--- |   |      |                         |      |      |          |      |      |          |      |      |         |      |      |                                   |              |                             |                        |
| 2 PLACES  | ±---   | ±---   |      |   |      |                         |      |      |          |      |      |          |      |      |         |      |      |                                   |              |                             |                        |
| 1 PLACE   | ±---   | ±---   |      |   |      |                         |      |      |          |      |      |          |      |      |         |      |      |                                   |              |                             |                        |
|   |  | DRAWN BY DATE<br>RSTONE 2016/12/07   |      | <b>MINI-CHANGE RECEPTACLE FEMALE 6 TO 8 POLE 16 AWG</b> |      |                         |      |      |          |      |      |          |      |      |         |      |      |                                   |              |                             |                        |
|   |  | CHECKED BY DATE<br>M ZIELIN 2016/12/12   |      |   |      |                         |      |      |          |      |      |          |      |      |         |      |      |                                   |              |                             |                        |
|   |  | APPROVED BY DATE<br>BWOODMAN 2017/01/16  |      | <b>MOLEX INCORPORATED</b>                               |      |                         |      |      |          |      |      |          |      |      |         |      |      |                                   |              |                             |                        |
|   |  | MATERIAL NO. ---   |      | DOCUMENT NO. <b>SD-130014-009</b>                       |      | SHEET NO. <b>1 OF 1</b> |      |      |          |      |      |          |      |      |         |      |      |                                   |              |                             |                        |
| DRAFT WHERE APPLICABLE MUST REMAIN WITHIN DIMENSIONS  |  | THIS DRAWING CONTAINS INFORMATION THAT IS PROPRIETARY TO MOLEX INCORPORATED AND SHOULD NOT BE USED WITHOUT WRITTEN PERMISSION  |      |   |      |                         |      |      |          |      |      |          |      |      |         |      |      |                                   |              |                             |                        |